



60TH
1960
2020

EXP 5015



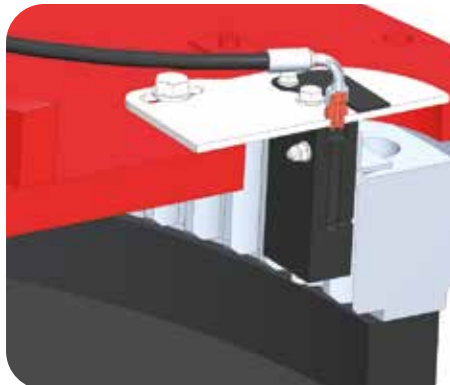
Safety - Maintenance



Centralized automatic greasing system (as standard), to make easier service operations.



Automatic greasing of the slewing ring teeth.



Centralized manual greasing system for the undercarriage (available as option) for an easier maintenance of the machine.



Solmec has always been committed to work safety. The overload warning device system controls the load handled by the machine and stops the movements when it exceeds the maximum load allowed, authorizing only the movements that permit to be brought back the load to the safety position.

The operator presence system allows the use of machine controls only if the left armrest is lowered.

Non-slip steps and side handrails make it easier for the operator to get on and off the machine. The large bonnets, with gas springs, can be easily raised and opened to allow major maintenance operations to be carried out quickly and efficiently, while preserving operator safety.

The intervals of maintenance have been extended to reduce maintenance time, increase machine availability and reduce operating costs.

Non-slip platform for safe access.



Ergonomic steps for an easy access to the driving position. Rubber canvas lower bands to absorb shocks.



Handrails and wide steps standard included, for a safer and easier access on the machine.



Aluminium large meshes radiators, with thermostatic reversible fan increase cleanness of the radiators and reduce diesel consumption.



The majority of the grease points are easily accessible from the ground.

A programmable automatic lubrication system is standard for the slewing ring and equipment.

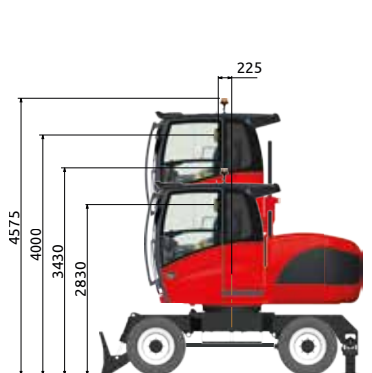
Air cleaner with self-cleaning micro-cyclones vacuum system standard included: lower maintenance time and costs, higher efficiency for the air filter, optimum working conditions for the Diesel engine.



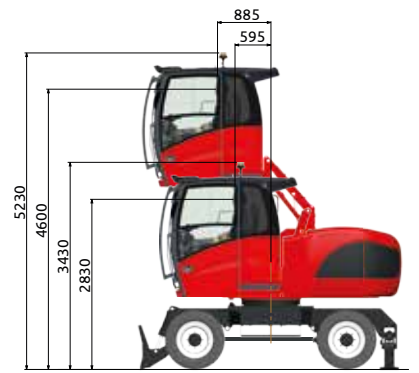
As option: Rear camera on counterweight with 7" color display into the cabin. It's also possible to fit a camera on the right side and under the cab.



As standard: operators cabin with hydraulic vertical elevation has a 4,0m high reach (operator's eye).



As option: operators cabin with hydraulic parallelogram elevation has a 4,60m high reach (operator's eye).



Performances - Comfort

For over 60 years, Solmec produces material handling machines for scraps metal and waste recycling industry, for steel mills, for port and rail unloading, for sawmills, tanneries and car dismantlers. The new spacious cabin, equipped with every comfort, guarantees a pleasant and efficient working environment. The large windows in addition to the elevation cab allow a perfect view of the working area and ensure to the operator a driving in perfect safety .



New electronic joysticks with proportional rollers for precise control of the bucket rotation, the front blade and the outriggers.

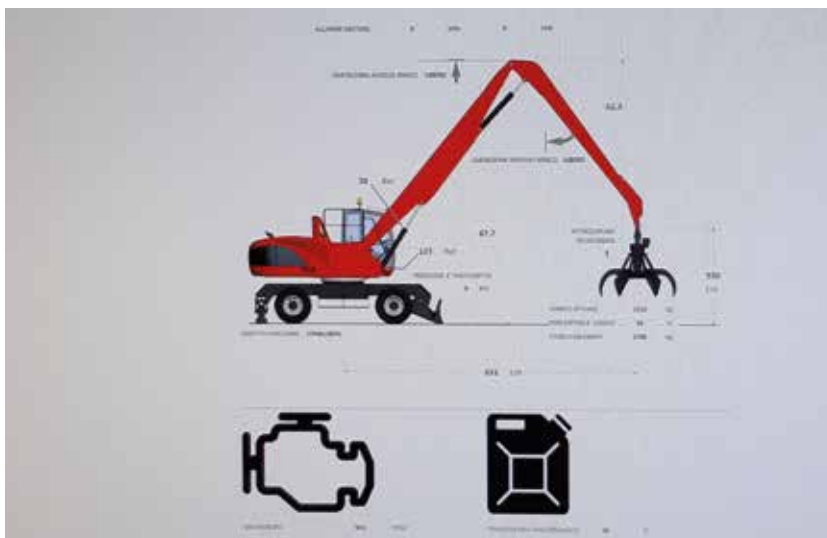


The clear visual instrumentation panel allows monitoring of all machines functions: engine rpm, engine liquid temperature, fuel level, engine oil pressure light, batteries voltage indicator, lights for air filter and hydraulic oil filter clogging, total an partial hour counter.

Driver's cab with sliding door and large glass surfaces for better visibility, vertical opening front window, left sliding side window (on the door), wiper with washer fluid, LED headlights and orange beacon on the cab roof.



Solida - SOLmec Link DAta (option)



Solida (Solmec Link data) is a tool completely integrate on the material handler monitoring system and it permit to check :

- The position
- The working hours
- Fuel consumption
- Downtime machine
- etc...

These data are viewed through the web interface or integrated connection to the company management system.

Easy access button panel for headlights, wind-shield wipers and radio.



Automatic air conditioned as standard.



3 air conditioning fans separated from the main radiator for a more efficient cooling system.



Roll-up sun blind and wiper on the roof.



Front roll-up sun blind.



3 Standard LED headlights on cab roof.



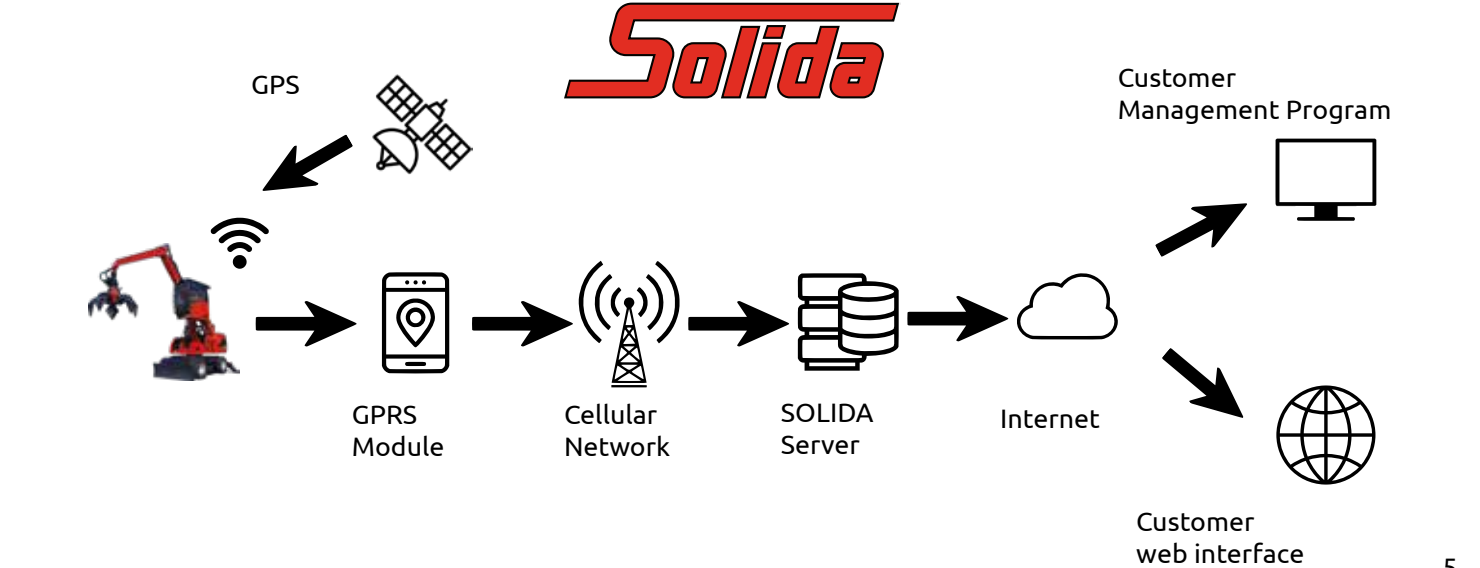
The front vertical opening glass allows the passage of air without letting water in case of rain.

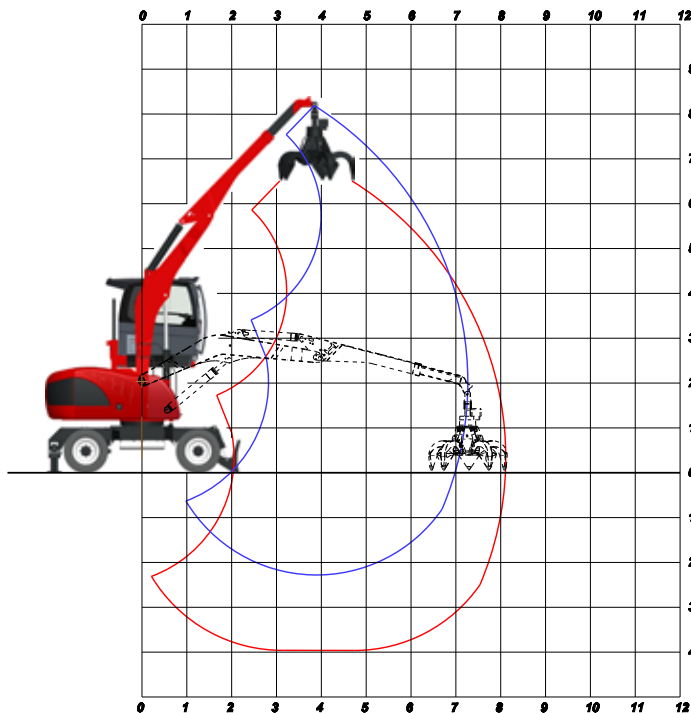


Adjustable steering column



... for a better driving position.










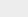





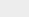


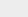
AT7:
Gooseneck boom
4,00 m

Telescopic stick
2,50 - 3,40 m

OPERATING WEIGHT:
17.700 kg

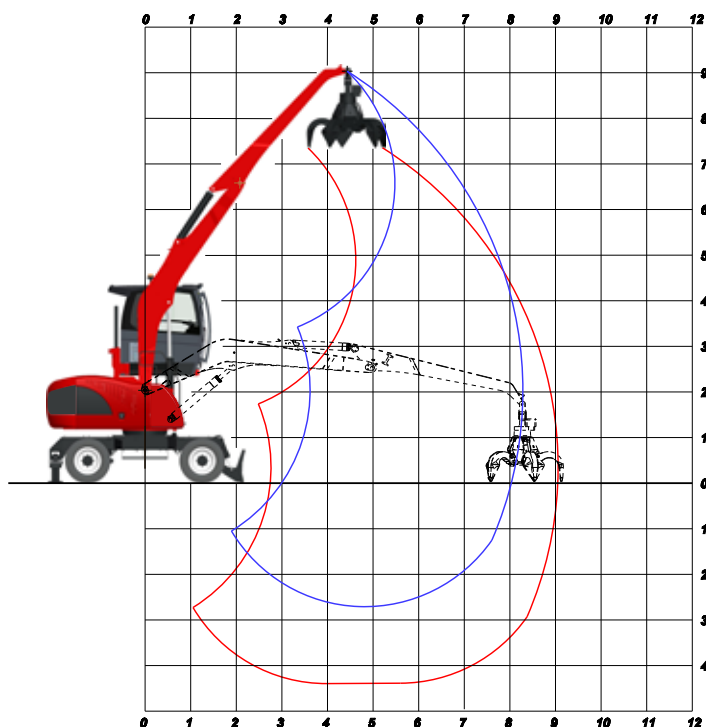
OPERATING WEIGHT WITH, FRONT BLADE,
REAR OUTRIGGERS, SOLID RUBBER TYRES,
GOOSENECK BOOM 4,00 M,
TELESCOPIC STICK 2,5 - 3,4 M,
RV 320 ORANGE PEEL GRAB WITH ROTATOR

LIFTING CAPACITIES TONS

| | | LIFTING RANGE (m) | | | | | | | | | | | | | | |
|------------------|-------|---|---|---|---|---|---|---|---|---|---|---|---|---|---|---|
| | | 3,00 | | | 4,00 | | | 5,00 | | | 6,00 | | | 7,30 | | |
| HEIGHT METRES | CONF. |  |  |  |  |  |  |  |  |  |  |  |  |  |  |  |
| 6,0 | ○○ | | | | | | | 4,23* | 4,23* | 3,18 | 3,88* | 3,81 | 2,86 | | | |
| | └┘ | | | | | | | 4,23* | 4,23* | 3,68* | 3,88* | 3,88* | 3,38* | | | |
| 4,5 | ○○ | | | | | | | 4,34* | 4,34* | 3,26 | 4,2* | 3,82 | 2,87 | | | |
| | └┘ | | | | | | | 4,34* | 4,34* | 3,78* | 4,2* | 4,20* | 3,66* | | | |
| 3,0 | ○○ | | | | 5,19* | 5,19* | 3,9 | 4,88* | 4,86 | 3,65 | 4,46* | 3,74 | 2,81 | | | |
| | └┘ | | | | 5,19* | 5,19* | 4,52* | 4,88* | 4,88* | 4,24* | 4,46* | 4,46* | 3,88* | | | |
| 1,5 | ○○ | 8,78* | 8,78* | 6,59 | 6,70* | 6,35 | 4,77 | 5,54* | 4,66 | 3,50 | 4,79 | 3,64 | 2,73 | | | |
| | └┘ | 8,78* | 8,78* | 7,64* | 6,70* | 6,70* | 5,83* | 5,54* | 5,54* | 4,82* | 4,82* | 4,82* | 4,19* | | | |
| 0,0 | ○○ | 10,11* | 9,11 | 6,84 | 7,49* | 6,04 | 4,53 | 5,99* | 4,47 | 3,36 | 4,66 | 3,51 | 2,64 | 3,22* | 2,76 | 2,07 |
| | └┘ | 9,82* | 8,94 | 6,71 | 7,49* | 7,49* | 6,52* | 5,99* | 5,99* | 5,21* | 4,98* | 4,98* | 4,33* | 3,22* | 3,22* | 2,8* |
| -1,5 | ○○ | 10,11* | 10,11* | 8,79* | 7,38* | 5,92 | 4,44 | 5,79* | 4,39 | 3,30 | 4,48* | 3,49 | 2,62 | | | |
| | └┘ | 9,82* | 9,82* | 8,54* | 7,38* | 7,38* | 6,42* | 5,79* | 5,79* | 5,03* | 4,48* | 4,48* | 3,90* | | | |

↗ LIFTING CAPACITIES ON LONGITUDINAL AXIS ○ LIFTING CAPACITIES ON 360° WITHOUT SAFETY FACTOR ⊙ LIFTING CAPACITIES ON 360° ACCORDING WITH ISO 10567
*= HYDRAULIC LIMIT

LIFTING CAPACITIES ARE ON HOOK WITHOUT GRABS, MACHINE STATIC, LEVEL SOLID GROUND, WITH AXLE LOCKED.



AF8:
Gooseneck boom
5,00 m

Industrial stick
3,40 m

OPERATING WEIGHT:

18.000 kg

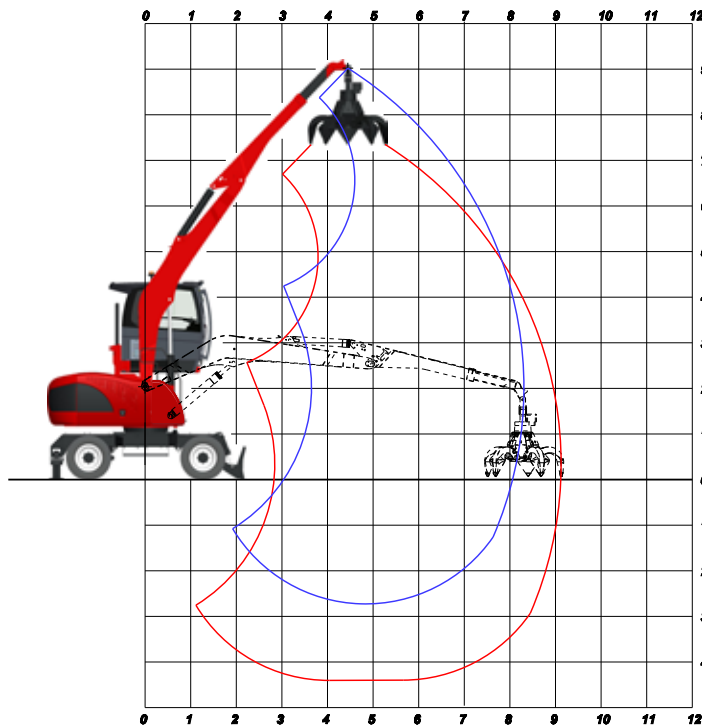
OPERATING WEIGHT WITH, FRONT BLADE,
REAR OUTRIGGERS, SOLID RUBBER TYRES,
GOOSENECK BOOM 5,00 M,
INDUSTRIAL STICK 3,4 M,
RV 320 ORANGE PEEL GRAB WITH ROTATOR

LIFTING CAPACITIES TONS

| | | LIFTING RANGE (m) | | | | | | | | | | | |
|------------------|-------|-------------------|-------|-------|--------------|-------|-------|--------------|-------|-------|--------------|-------|-------|
| | | 4,00 | | | 5,50 | | | 7,00 | | | 8,20 | | |
| HEIGHT METRES | CONF. | ↗ | ○ | ⊙ | ↗ | ○ | ⊙ | ↗ | ○ | ⊙ | ↗ | ○ | ⊙ |
| 6,0 | ○○ | | | | 3,95* | 3,95* | 2,97 | 3,78* | 3,15 | 2,37 | | | |
| | ⊥∟ | | | | 3,95* | 3,95* | 3,43* | 3,78* | 3,78* | 3,29* | | | |
| 4,5 | ○○ | | | | 4,20* | 4,20* | 3,15 | 3,80* | 3,10 | 2,33 | | | |
| | ⊥∟ | | | | 4,20* | 4,20* | 3,66* | 3,80* | 3,8* | 3,3* | | | |
| 3,0 | ○○ | 5,93* | 5,93* | 4,45 | 4,68* | 4,22 | 3,17 | 3,92 | 3,01 | 2,26 | | | |
| | ⊥∟ | 5,93* | 5,93* | 5,16* | 4,68* | 4,68* | 4,07* | 3,97* | 3,97* | 3,45* | | | |
| 1,5 | ○○ | 6,96* | 6,07 | 4,56 | 5,19* | 4,07 | 3,06 | 3,85 | 2,94 | 2,21 | 3,09 | 2,37 | 1,78 |
| | ⊥∟ | 6,96* | 6,96* | 6,06* | 5,19* | 5,19* | 4,52* | 4,17* | 4,17* | 3,62* | 3,58* | 3,58* | 3,12* |
| 0,0 | ○○ | 7,61* | 5,98 | 4,49 | 5,14 | 3,86 | 2,90 | 3,77 | 2,86 | 2,15 | | | |
| | ⊥∟ | 7,61* | 7,61* | 6,62* | 5,39* | 5,39* | 4,69* | 4,23* | 4,23* | 3,68* | | | |
| -1,5 | ○○ | 7,26* | 5,78 | 4,34 | 5,15 | 3,85 | 2,89 | 3,74 | 2,83 | 2,13 | | | |
| | ⊥∟ | 7,26* | 7,26* | 6,31* | 5,29* | 5,29* | 4,61* | 3,90* | 3,90* | 3,40* | | | |

↗ LIFTING CAPACITIES ON LONGITUDINAL AXIS ○ LIFTING CAPACITIES ON 360° WITHOUT SAFETY FACTOR ⊙ LIFTING CAPACITIES ON 360° ACCORDING WITH ISO 10567
*= HYDRAULIC LIMIT

LIFTING CAPACITIES ARE ON HOOK WITHOUT GRABS, MACHINE STATIC, LEVEL SOLID GROUND, WITH AXLE LOCKED.



AT8:
Gooseneck boom
5,00 m

Telescopic stick
2,50 m - 3,40 m

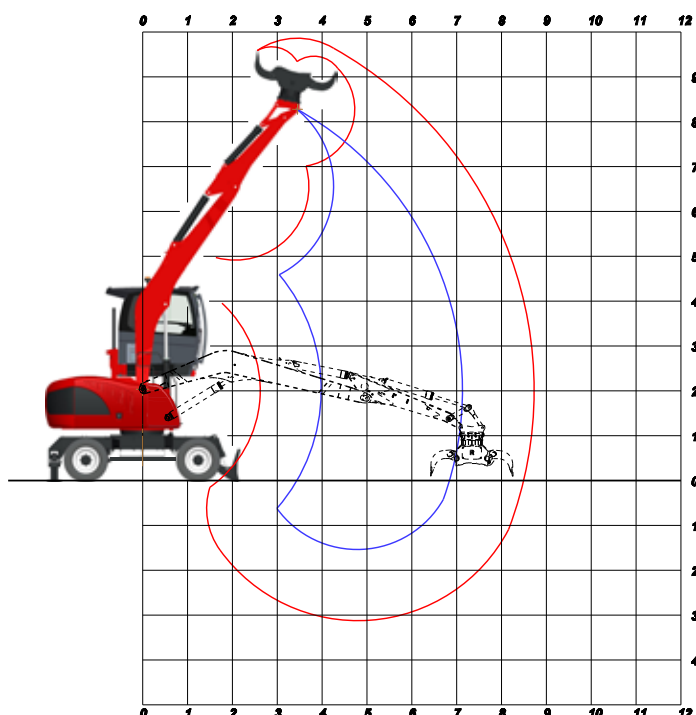
OPERATING WEIGHT:
18.200 kg

OPERATING WEIGHT WITH, FRONT BLADE,
REAR OUTRIGGERS, SOLID RUBBER TYRES,
GOOSENECK BOOM 5,00 M,
TELESCOPIC STICK 2,5 - 3,4 M,
RV 320 ORANGE PEEL GRAB WITH ROTATOR

LIFTING CAPACITIES TONS

| | | LIFTING RANGE (m) | | | | | | | | | | | |
|------------------|----------|-------------------|-------|-------|--------------|-------|-------|--------------|-------|-------|-------------|------|-------|
| | | 4,00 | | | 5,50 | | | 7,00 | | | 8,2 | | |
| HEIGHT METRES | CONF. | ↗ | ○ | ⊙ | ↗ | ○ | ⊙ | ↗ | ○ | ⊙ | ↗ | ○ | ⊙ |
| 6,0 | ○○ ⊥⊥ | | | | 3,79* | 3,79* | 2,85 | 3,61* | 3,02 | 2,27 | | | |
| | | | | | 3,79* | 3,79* | 3,3* | 3,61* | 3,61* | 3,14* | | | |
| 4,5 | ○○ ⊥⊥ | | | | 4,04* | 4,04* | 3,03 | 3,63* | 2,96 | 2,22 | | | |
| | | | | | 4,04* | 4,04* | 3,51* | 3,63* | 3,63* | 3,16* | | | |
| 3,0 | ○○ ⊥⊥ | 5,73* | 5,73* | 4,3 | 4,49* | 4,06 | 3,05 | 3,77 | 2,86 | 2,15 | | | |
| | | 5,73* | 5,73* | 4,98* | 4,49* | 4,49* | 3,91* | 3,79* | 3,79* | 3,3* | | | |
| 1,5 | ○○ ⊥⊥ | 6,71* | 5,85 | 4,39 | 4,98* | 3,89 | 2,92 | 3,69 | 2,78 | 2,09 | 2,94 | 2,22 | 1,67 |
| | | 6,71* | 6,71* | 5,84* | 4,98* | 4,98* | 4,33* | 3,97* | 3,97* | 3,46* | 3,4* | 3,4* | 2,96* |
| 0,0 | ○○ ⊥⊥ | 7,33* | 5,73 | 4,3 | 4,95 | 3,67 | 2,76 | 3,6 | 2,69 | 2,02 | | | |
| | | 7,33* | 7,33* | 6,38* | 5,16* | 5,16* | 4,49* | 4,03* | 4,03* | 3,5* | | | |
| -1,5 | ○○ ⊥⊥ | 6,98* | 5,53 | 4,15 | 4,95 | 3,65 | 2,74 | 3,57 | 2,67 | 2,01 | | | |
| | | 6,98* | 6,98* | 6,07* | 5,06* | 5,06* | 4,41* | 3,71* | 3,71* | 3,22* | | | |

↗ LIFTING CAPACITIES ON LONGITUDINAL AXIS ○ LIFTING CAPACITIES ON 360° WITHOUT SAFETY FACTOR ⊙ LIFTING CAPACITIES ON 360° ACCORDING WITH ISO 10567
* = HYDRAULIC LIMIT
LIFTING CAPACITIES ARE ON HOOK WITHOUT GRABS, MACHINE STATIC, LEVEL SOLID GROUND, WITH AXLE LOCKED.



AS8:
Gooseneck boom
5,00 m







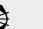
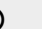

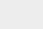
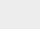
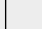
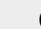


Selector arm
2,20 m

OPERATING WEIGHT:

17.800 kg

OPERATING WEIGHT WITH FRONT BLADE,
REAR OUTRIGGERS, SOLID RUBBER TYRES,
GOOSENECK BOOM 5,00 m,
SELECTOR ARM
RSG 451X SELECTOR GRAB WITH ROTATOR

LIFTING CAPACITIES TONS

| | | LIFTING RANGE (m) | | | | | | | | | | | | | | |
|------------------|-------|---|---|---|---|---|---|---|---|--|---|---|---|---|---|---|
| | | 4,00 | | | 5,00 | | | 6.00 | | | 7,00 | | | 7,20 | | |
| HEIGHT METRES | CONF. |  |  |  |  |  |  |  |  |  |  |  |  |  |  |  |
| 7,0 | OO | | | | 3,46* | 3,46* | 2,78 | | | | | | | | | |
| | ⊥ | | | | 3,46* | 3,46* | 3,01 | | | | | | | | | |
| 6,0 | OO | | | | 3,33* | 3,33* | 2,81 | | | | | | | | | |
| | ⊥ | | | | 3,33* | 3,33* | 2,90 | | | | | | | | | |
| 5,0 | OO | 3,75* | 3,75* | 3,26 | 3,43* | 3,43* | 2,77 | 3,24* | 2,92 | 2,19 | | | | | | |
| | ⊥ | 3,75* | 3,75* | 3,26 | 3,43* | 3,43* | 2,99 | 3,24* | 3,24* | 2,82 | | | | | | |
| 4,0 | OO | 4,19* | 4,19* | 3,53 | 3,65* | 3,60 | 2,70 | 3,32* | 2,88 | 2,16 | | | | | | |
| | ⊥ | 4,19* | 4,19* | 3,64 | 3,65* | 3,65* | 3,17 | 3,32* | 3,32* | 2,89 | | | | | | |
| 3,0 | OO | 4,81* | 4,81* | 3,50 | 3,93* | 3,51 | 2,63 | 3,46* | 2,81 | 2,11 | 3,05 | 2,32 | 1,74 | | | |
| | ⊥ | 4,81* | 4,81* | 4,18 | 3,93* | 3,93* | 3,42 | 3,46* | 3,46* | 3,01 | 3,16* | 3,16* | 2,75 | | | |
| 2,0 | OO | 5,42* | 4,71 | 3,53 | 4,21* | 3,44 | 2,58 | 3,58* | 2,75 | 2,06 | 3,02 | 2,29 | 1,72 | 2,94 | 2,23 | 1,67 |
| | ⊥ | 5,42* | 5,42* | 4,72 | 4,21* | 4,21* | 3,66 | 3,58* | 3,58* | 3,12 | 3,17* | 3,17* | 2,76 | 3,10* | 3,10* | 2,70 |
| 1,0 | OO | 5,78* | 4,76 | 3,57 | 4,41* | 3,41 | 2,56 | 3,66* | 2,70 | 2,03 | 3,00 | 2,26 | 1,70 | | | |
| | ⊥ | 5,78* | 5,78* | 5,03 | 4,41* | 4,41* | 3,83 | 3,66* | 3,66* | 3,18 | 3,12* | 3,12* | 2,72 | | | |
| 0,0 | OO | 5,77* | 4,76 | 3,57 | 4,42* | 3,39 | 2,54 | 3,57 | 2,68 | 2,01 | | | | | | |
| | ⊥ | 5,77* | 5,77* | 5,02 | 4,42* | 4,42* | 3,85 | 3,62* | 3,62* | 3,15 | | | | | | |

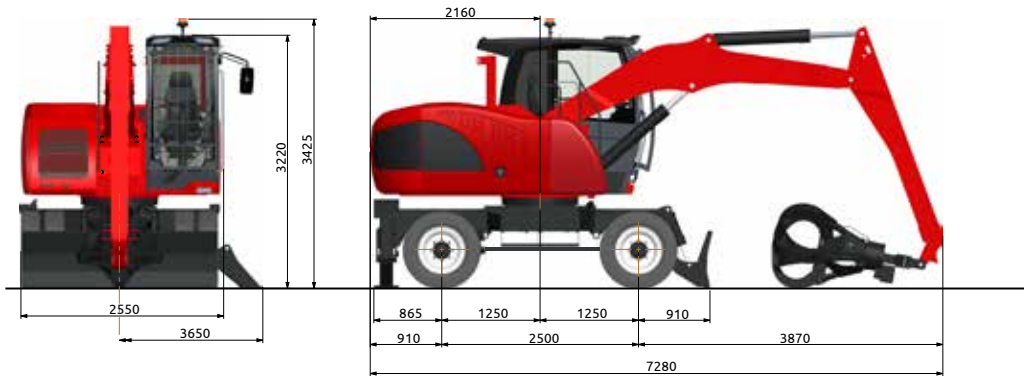
↗ LIFTING CAPACITIES ON LONGITUDINAL AXIS ○ LIFTING CAPACITIES ON 360° WITHOUT SAFETY FACTOR ⊙ LIFTING CAPACITIES ON 360° ACCORDING WITH ISO 10567

*= HYDRAULIC LIMIT

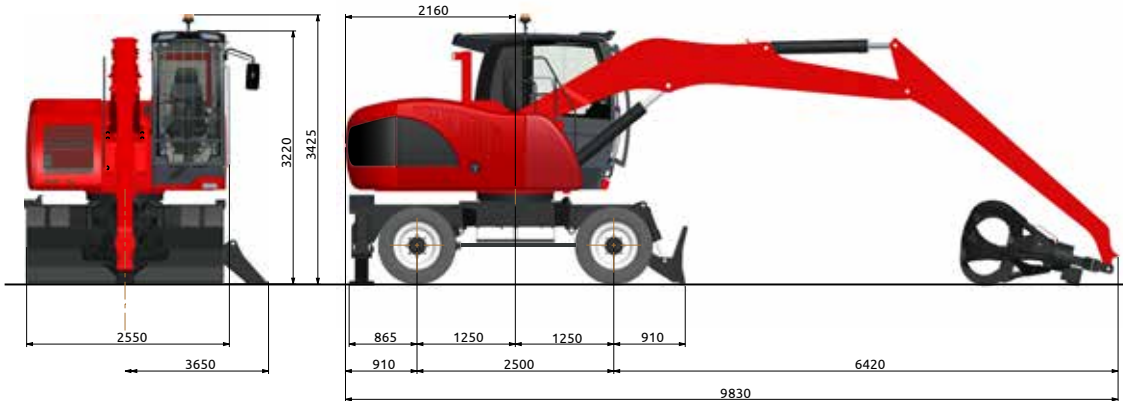
LIFTING CAPACITIES ARE ON HOOK WITHOUT GRABS, MACHINE STATIC, LEVEL SOLID GROUND, WITH AXLE LOCKED.

DIMENSIONS

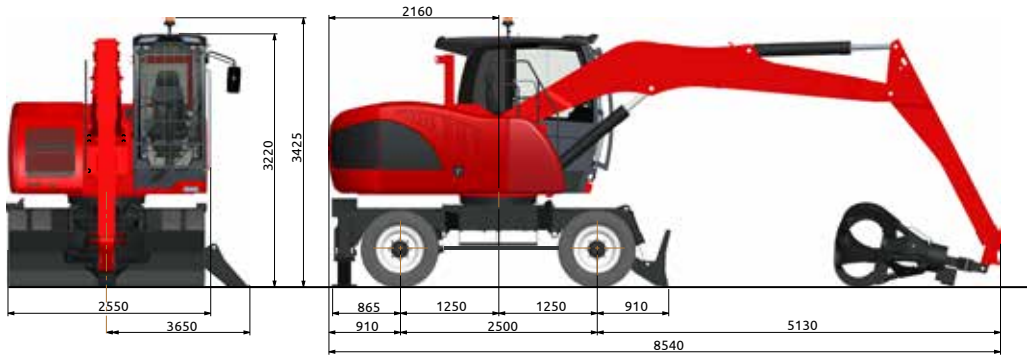
AT7



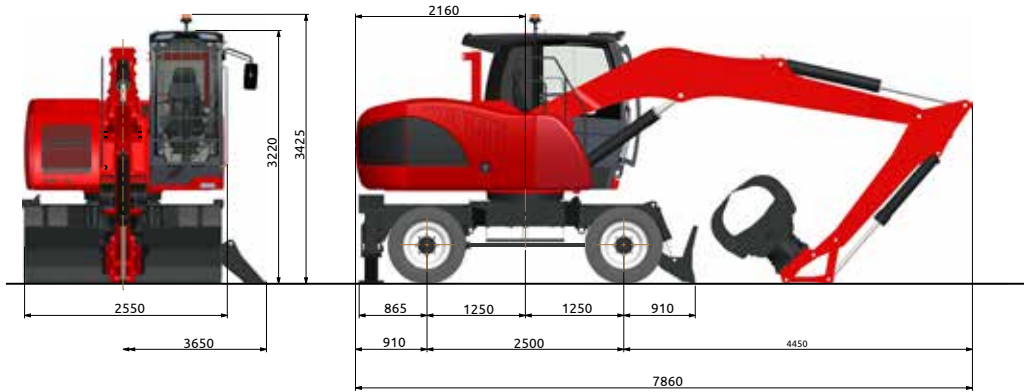
AF8



AT8



AS8



TECHNICAL DATA EXP 5015

DIESEL ENGINE

TCD 3.6 L4 – TIER 5 – Ecological with catalytic converter DVERT® and emissions controlled with electronically controlled injection - particle filter and ADblue® - 4 cylinders in-line - turbo-charged with intercooler air/air - common rail - direct injection - water cooled - electric starting system 24 V -

| | |
|------------------------|---------------------------|
| Displacement | 3600 cm ³ |
| Power: | 85 kW (116 CV) @ 2300 rpm |
| Max torque: | 460 Nm @ 1600 rpm |
| Tank capacity: | 220 l |
| ADblue® Tank capacity: | 15 L |

HYDRAULIC SYSTEM

Open "LOAD SENSING" circuit constituted by a variable displacement axial piston pump, with automatic flow setting, connected to the Diesel engine, feeding a distributor block composed by 7 elements, with high pressure control valves and anti-choc valves on each element.

| | |
|-----------------------------|-----------|
| Max. flow: | 210 l/min |
| Max. hydraulic pressure: | 300 bar |
| Hydraulic tank capacity: | 200 l |
| Hydraulic circuit capacity: | 250 l |

Additional pumps for auxiliary services.

Hydraulic oil cooling by means aluminium large mesh heat exchanger combined with engine and intercooler radiator. Automatic reversible fan for radiator cleaning as standard.

LOAD SENSING system distributor block with simultaneous movements independent of the load and without interaction with synchronised control of all functions.

TRAVEL

Hydrostatic with 4 wheel drive by means of a variable displacement hydraulic axial piston motor mounted on a two speed gearbox hydraulically operated from the cab coupled to the rear axle.

Travel controlled by two separate pedals (one for each travelling direction).

Travel speed (in both directions)

| | |
|----------------|-------------------|
| Working speed: | from 0 to 5 km/h |
| Travel speed: | from 0 to 12 km/h |

Differential axles 2,50 m wide with planetary reduction gears on the hubs.

Braking valve integrated on the hydraulic motor.

STEERING

Hydraulic steering system powered by an independent pump. The front floating steering axle can be hydraulically locked from the cabin in any position.

BRAKES

SERVICE BRAKES: Acting on the transmission using the self-braking characteristic of the travel hydrostatic system.

PARKING AND EMERGENCY BRAKES: Negative type with multiple discs oil bath on the rear axle and electro-hydraulic control for release.

TYRES

Nr 8 "Superelastic" solid rubber tyres with rubber spacer rings - 9.00x20

On request twinned tyres - 9.00x20 - 14 PR

SWING SYSTEM

Unlimited rotation in both directions by means of an axial piston hydraulic motor with integrated control valve, splined to a planetary reduction unit with oil bath gears. - Anti-shock valves protect the system.

High diameter double row ball bearing ring with internal teeth. Automatic greasing system

| | |
|--|--------|
| Max rotation speed: | 9 rpm |
| Overall dimensions of rotating turret: | 2,25 m |

OPERATOR'S CAB

Hydraulically operated raising driver's cab installed on silent block with sliding door, large windows of tinted heat resistant safety glass; front vertical opening window, and lateral opening window, upper glass with safety grid and wiper. Winter heating and automatic air-conditioned installed as standard. Radio fitting. Operator presence system installed on the left armrest.

"GRAN COMFORT" adjustable operator's seat in its entirety with hydraulic joysticks incorporated in its arms.

Windscreen wiper with washer; LED lights and orange beacon on the cab roof.

CONTROLS

N° 2 electronically controlled joysticks to carry out four operations each with electric push buttons incorporated. Rollers for front blade, outriggers, grab rotator, dipper telescopic extension. Electro hydraulic devices for gear box control, parking brakes, hydraulic raising of the cab, front axle oscillation lock. Complete instrumentation for general control of the all functions as: engine rpm, engine oil pressure, turbine pressure, instantaneous fuel consumption, batteries voltage, CAN-BUS engine diagnostics, hour counter, fuel level, engine temperature, etc..

ARMS

With reach from 7 to 9 metres.

SOUND LEVELS

| | |
|---|---------------|
| SOUND LEVELS (EEC Directive 2000/14/CE) | |
| Inside cab | LpA 76 dB (A) |

ELECTROMAGNETIC COMPATIBILITY

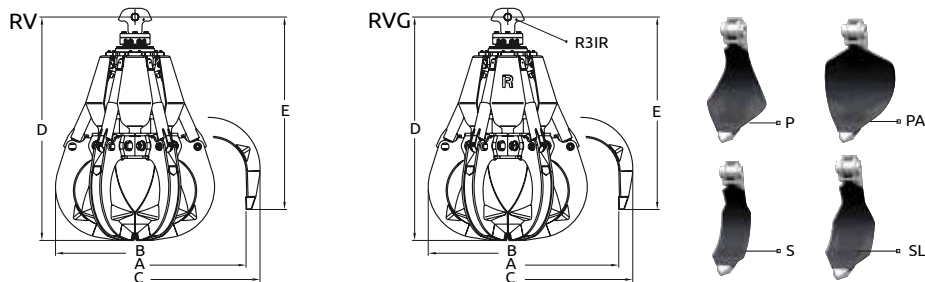
In accordance with CE Directive (Dir. 2004/108/CE)

OVERLOAD WARNING DEVICE

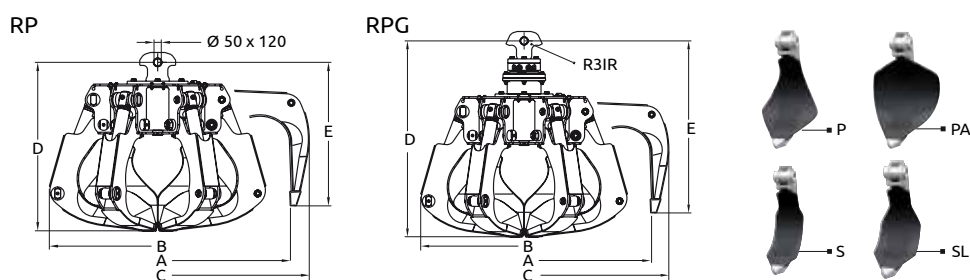
In accordance with CE directive (Dir 2006/42/CE) this device provides to check the crane stability while loading in accordance with loads and distances (as standard). When the stability limits are reached, acoustical and optical warning advise danger conditions before the automatic lock of movements.

ATTACHMENTS

ORANGE PEEL GRABS FOR SCRAP

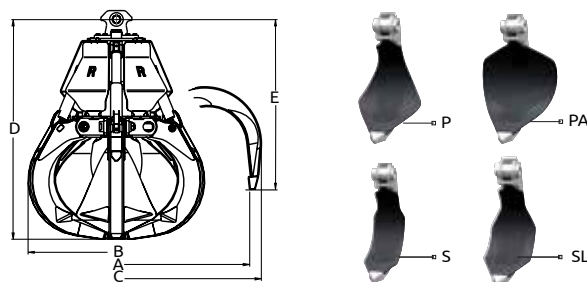


| Model | Capacity | Tines | Weight | Nb of Tines | Dimensions in mm | | | | |
|--------|----------|-----------------|--------|-------------|------------------|------|------|------|------|
| | | | | | A | B | C | D | E |
| RV320 | 320l | P - PA - S - SL | 620 kg | 5 | 1680 | 1170 | 1800 | 1320 | 1100 |
| RV320 | 320l | P - PA - S - SL | 680 kg | 6 | 1680 | 1170 | 1800 | 1320 | 1100 |
| RVG320 | 320l | P - PA - S - SL | 740 kg | 5 | 1680 | 1170 | 1800 | 1410 | 1190 |
| RVG320 | 320l | P - PA - S - SL | 800 kg | 6 | 1680 | 1170 | 1800 | 1410 | 1190 |



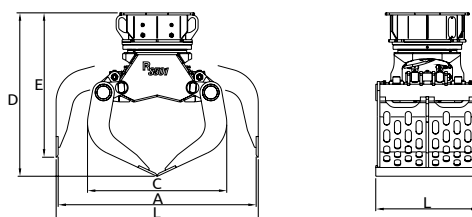
| Model | Capacity | Tines | Weight | Nb of Tines | Dimensions in mm | | | | |
|--------|----------|-----------------|--------|-------------|------------------|------|------|------|------|
| | | | | | A | B | C | D | E |
| RP380 | 380l | P - PA - S - SL | 780 kg | 5 | 1780 | 1370 | 2015 | 1145 | 930 |
| RP380 | 380l | P - PA - S - SL | 830 kg | 6 | 1780 | 1370 | 2015 | 1145 | 930 |
| RPG380 | 380l | P - PA - S - SL | 870 kg | 5 | 1780 | 1370 | 2015 | 1410 | 1195 |
| RPG380 | 380l | P - PA - S - SL | 920 kg | 6 | 1780 | 1370 | 2015 | 1410 | 1195 |

ORANGE PEEL GRABS FOR WASTE



| Model | Capacity | Tines | Weight | Nb of Tines | Dimensions in mm | | | | |
|-------|----------|-----------------|--------|-------------|------------------|------|------|------|------|
| | | | | | A | B | C | D | E |
| RR560 | 560l | P - PA - S - SL | 660 kg | 5 | 200 | 1310 | 2110 | 1460 | 1110 |

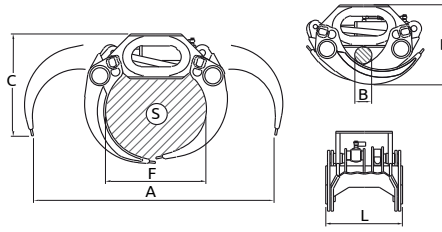
SELECTOR GRAB



| Model | Capacity | Tine Force | Weight | Dimensions in mm | | | | | |
|---------|----------|------------|--------|------------------|------|------|------|------|-----|
| | | | | A | B | C | D | E | L |
| RSG451X | 320 l | 3630 daN | 780 kg | 1800 | 1840 | 1160 | 1360 | 1220 | 700 |

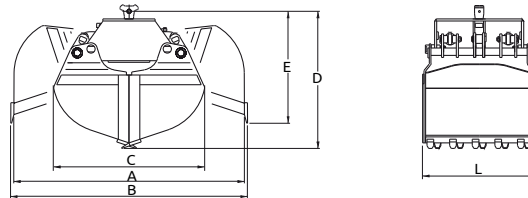
ATTACHMENTS

LOGS GRAPPLES



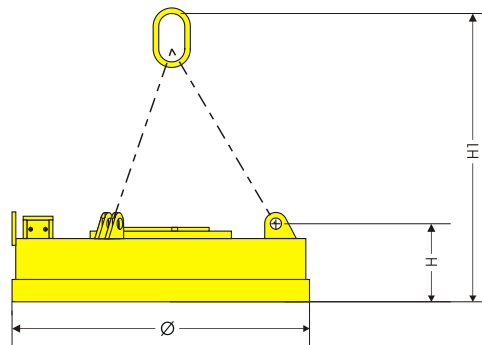
| Model | Area | Lifting capacity | Weight | Dimensions in mm | | | | | |
|-----------|---------------------|------------------|--------|------------------|-----|-----|-----|-----|-----|
| | | | | A | B | C | D | L | F |
| R50/401 | 0,40 m ² | 3000 kg | 405 kg | 1900 | 140 | 810 | 670 | 640 | 800 |
| SG420 | 0,42 m ² | 5500 kg | 320 kg | 2075 | 120 | 848 | 649 | 510 | - |
| SG520S-HD | 0,52 m ² | 8000 kg | 475 kg | 2279 | 170 | 886 | 753 | 514 | - |

CLAMSHELL BUCKETS



| Model | Capacity | Tine Force | Weight | Dimensions in mm | | | | | |
|----------|----------|------------|--------|------------------|------|------|------|------|------|
| | | | | A | B | C | D | E | L |
| R41/500 | 480 l | 3950 daN | 465 kg | 1650 | 1740 | 1140 | 940 | 780 | 1020 |
| R41/700 | 500 l | 4400 daN | 680 kg | 1990 | 2070 | 1270 | 1230 | 1070 | 840 |
| R41/1000 | 750 l | 4060 daN | 830 kg | 2140 | 2220 | 1400 | 1320 | 1100 | 1020 |

MAGNET PLATES



| Model | Absorbed power at 20° C | Nominal | Peso | Ø | H | H1 | Hot tear strength (1) Δ= Ø300 | Hot Lifting Capacity (2) | | Hot Lifting Capacity (3) | | | |
|---------|-------------------------|---------|------|-----|-----|-----|----------------------------------|--------------------------|-----------|--------------------------|-------------------------------------|-------------------------------------|-------------------------------------|
| | | | | | | | | Slabs or blocks | Drop Ball | Cast Iron Pigs | SCRAP | | |
| | kW | Vdc | kg | mm | mm | mm | kg | kg | kg | kg | 3A 2,2 ÷ 2,5 t/m ³ | 24 1,9 ÷ 2,0 t/m ³ | 40 0,8 ÷ 1,0 t/m ³ |
| ECS 900 | 4 | 220 | 450 | 900 | 225 | 920 | 7900 | 3900 | 1380 | 160 | 150 | 130 | 70 |
| MRS 850 | 4,5 | 220 | 480 | 860 | 280 | 975 | 8200 | 4100 | 1700 | 200 | 170 | 160 | 80 |

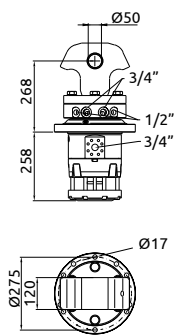
(1) Determined in accordance with VDE 0580 § 36

(2) Determined after 5 hours and an ambient temperature of 20°C in accordance with VDE 0580 § 36.

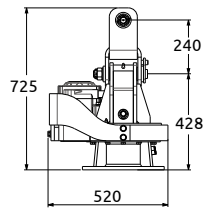
(3) Determined in accordance with VDE 0580 § 44.2-6.

ATTACHMENTS

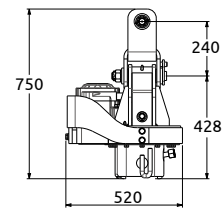
HYDRAULIC ROTATORS



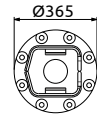
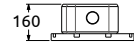
R3IR



GI 60 AF

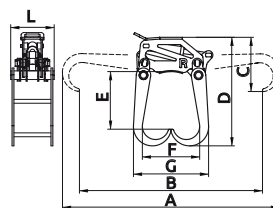


GI 60 AR



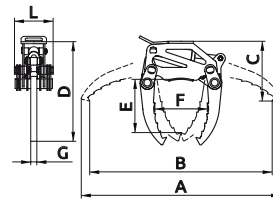
| Model | Lifting capacity | Weight | Couple | Rotation max pressure | Rotation max flow | Attachment max pressure | Attachment max flow |
|----------|------------------|--------|-----------|-----------------------|-------------------|-------------------------|---------------------|
| R3IR | 7 t | 125 kg | 210 daN.m | 190 bar | 25 l/min | 350 bar | -- |
| GI 60 AF | 5 t | 200 kg | 310 daN.m | 100 bar | 25 l/min | 300 bar | 180 lt/mn |
| GI 60 AR | 5 t | 210 kg | 310 daN.m | 100 bar | 25 l/min | 300 bar | 180 lt/mn |

SPECIAL GRABS



R51

FOR CAR BODY

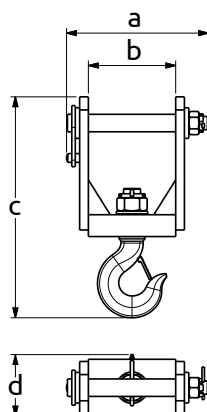


R58

FOR ENGINE

| Model | Load capacity | Tooth Force | Weight | Dimensions in mm | | | | | | | |
|-------|---------------|-------------|--------|------------------|------|-----|------|-----|-----|-----|-----|
| | | | | A | B | C | D | E | F | G | L |
| R51 | 2000 kg | 1540 kg | 250 kg | 2400 | 2020 | 600 | 1200 | 640 | 630 | 830 | 480 |
| R58 | 1000 kg | 1940 kg | 260 kg | 1980 | 1810 | 590 | 990 | 530 | 520 | 60 | 380 |

LIFTING HOOK

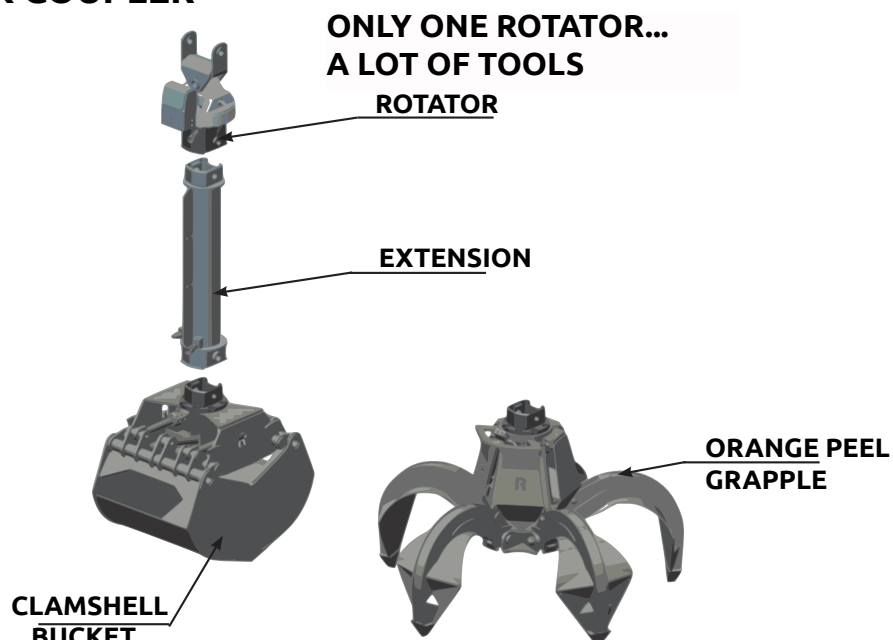


| Model | Lifting capacity | Weight | Dimensions in mm | | | |
|-------|------------------|--------|------------------|-----|-----|-----|
| | | | a | b | c | d |
| 7.5 T | 7500 kg | 30 kg | 325 | 200 | 510 | 140 |

ACCESSORIES

| ACCESSORIES | STANDARD | OPTIONAL |
|--|----------|----------|
| - N° 8 TWINNED SOLID RUBBER TYRES WITH SPACER RUBBER RINGS | • | |
| - GREASING MANUAL SYSTEM FOR UNDERCARRIAGE | | • |
| - STEERING ON JOYSTICK | | • |
| - VARIABLE DISPLACEMENT TRAVEL MOTOR | | • |
| - WIDENINGS FOR FRONT DOZER BLADE | | • |
| - TOWING HOOK | | • |
| - GEAR AND CARDAN JOINT PROTECTION | | • |
| - HYDRAULIC VERTICAL RAISING CAB | • | |
| - HYDRAULIC PARRALLELOGRAM RAISING CAB | | • |
| - "GRAND COMFORT" OPERATOR SEAT | • | |
| - SAFETY SEAT BELT | • | |
| - AUTOMATIC AIR-CONDITIONING SYSTEM | | • |
| - AIR-CONDITIONING FILTER WITH ACTIVATED CHARCOAL | | • |
| - RADIO WITH BLUETOOTH® | | • |
| - ANTI-THEFT "MED" IMMOBILIZER DEVICE | | • |
| - 3 WORKING LIGHTS ON THE CABIN | • | |
| - FRONT AND ROOF WINDOW PROTECTION | • | |
| - TOTAL PROTECTION FOR THE CABIN | | • |
| - AUTOMATIC GREASING SYSTEM FOR THE UPPERSTRUCTURE AND SLEW RING | • | |
| - THERMOSTATIC AUTOMATIC REVERSIBLE FAN | • | |
| - GENERATOR SYSTEM | | • |
| - 2 LED WORKING LIGHTS ON STICK | • | |
| - SAFETY VALVES ON ALL CYLINDERS | • | |
| - HEIGHT LIMIT DEVICES | | • |
| - OVERLOAD WARNING DEVICE | • | |
| - LOCKING ARCH FOR LONG LOGS ON BOOM AND/OR STICK | | • |
| - ADDITIONAL HEATING SYSTEM FOR COLD WEATHER COUNTRIES | | • |
| - CAMERA WITH 7" COLOURED DISPLAY INTO THE CABIN | | • |
| - FUEL AND HYDRAULIC OIL REFILLING PUMPS | | • |
| - SOLIDA REMOTE MONITORING (SOLMEC LINK DATA) | | • |

SOLMEC QUICK COUPLER





Viale delle industrie, 9
45100 ROVIGO - ITALY
phone +39 0425 474833
fax +39 0425 475548
www.solmec.it
solmec@solmec.it