



60TH
1960
2020

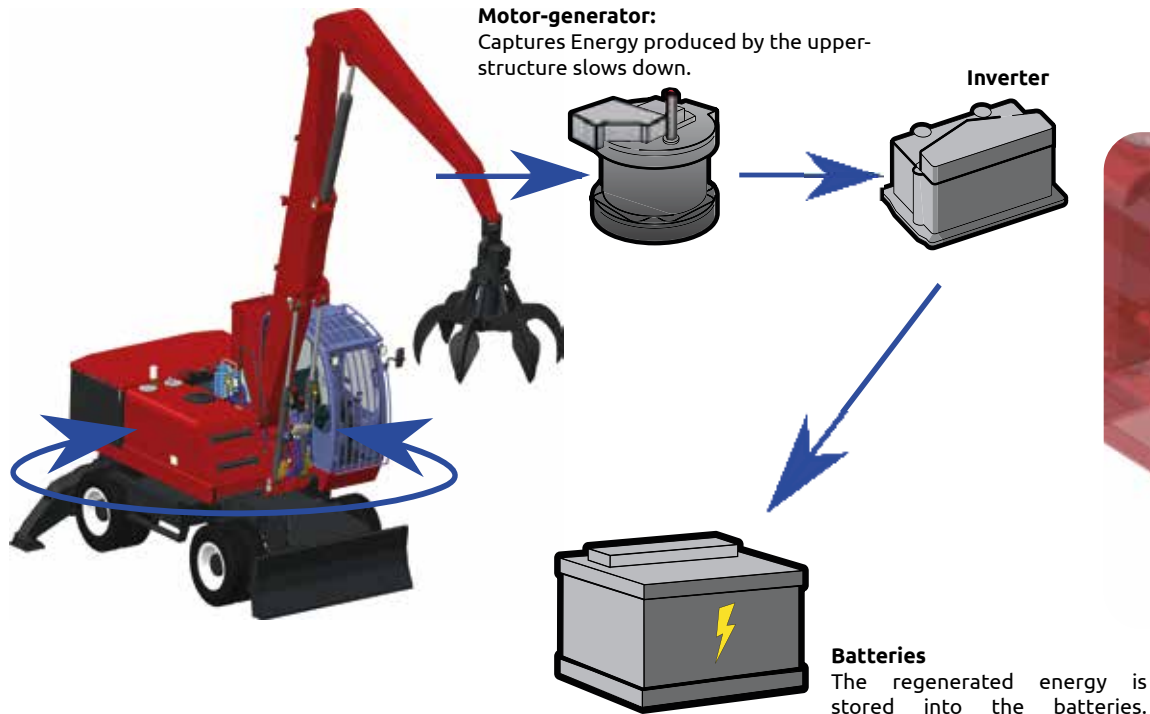
EXP 5020ZE



Safety - Maintenance

ENERGY SAVING (Kinetic Energy Recovery System)

The electric swing motor/generator captures and regenerates energy produced at each time by the upper structure slows down and converts it into electric energy. The regenerated energy is stored into the batteries.



Each of the 2 high-efficiency batteries is composed by 60 elements for a supply of 120 V at 930 Ah, for about 8 working hours.

Centralized automatic greasing system (as standard), to make easier service operations.



Automatic greasing of the slewing ring teeth.



Centralized manual greasing system for the undercarriage (available as option) for an easier maintenance of the machine

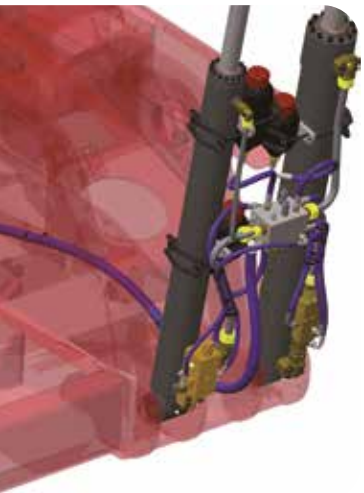


Solmec has always been committed to work safety. The “OWD” (Overload Warning Device), antirollover system, controls the load handled by the machine and stops the movements when it exceeds the maximum load allowed, authorizing only the movements that permit to be brought back the load to the safety position.

The operator presence system allows the use of machine controls only if the operator is seated on the driver’s seat with the left armrest lowered.

Non-slip steps and side handrails make it easier for the operator to get on and off the machine.

The new EXP 5020ZE has been designed and built specifically for industrial handling and with a special focus to the environment protection. **ZE = ZERO EMISSION.**



Load Energy Saving System (LESS)

It’s an hydro-pneumatic system of the machine passive weights support, it is constituted by a conventional hydraulic ram, connected directly to a series of hydro-pneumatic accumulator which guarantee a direct hydraulic force to the hydraulic ram. A multi-function solenoid valve unit, electronically managed, controls the correct functionality and the pre-charge pressure of the system. Through this system, the hydraulic power is used only for handling the load.

The majority of the grease points are easily accessible from the ground.

A programmable automatic lubrication system is standard for the slewing ring and equipment.

Thanks to the housings specially designed to receive the forks of a forklift, it is possible to lift the batteries to remove them from the machine.



High efficiency wall charger. Full charge in about 8 hours. Optional pedestal support can be provided.



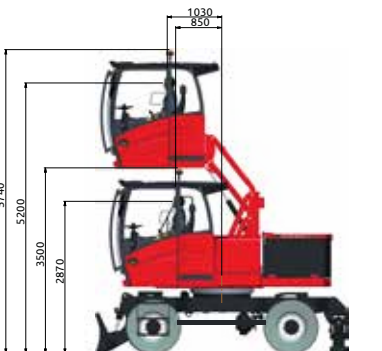
Ergonomic steps for easy access to the driving position. Rubber canvas lower bands to absorb shocks.



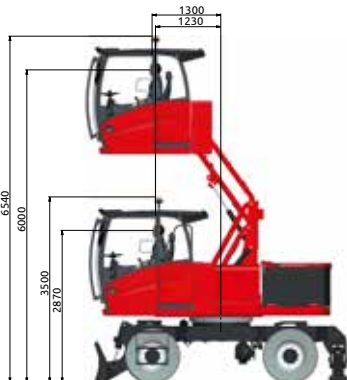
As option: Rear camera on counterweight with 7” color display into the cabin. Possibility to fit a camera on the right side and under the cab.



Operators cabin with hydraulic parallelogram elevation has a 5,2m high reach (operator’s eye).



It is possible, as option, to arrive to 6,0m high reach.



Performances - Comfort

For over 60 years, Solmec produces material handling machines for scraps metal and waste recycling industry, for steel mills, for port and rail unloading, for sawmills, tanneries and car dismantlers.

The new spacious cabin, equipped with every comfort, guarantees a pleasant and efficient working environment.

The large windows in addition to the elevation cab allow a perfect view of the working area and ensure to the operator a driving in perfect safety .



New electronic joysticks with proportional rollers for precise control of the bucket rotation, the front blade and the outriggers.

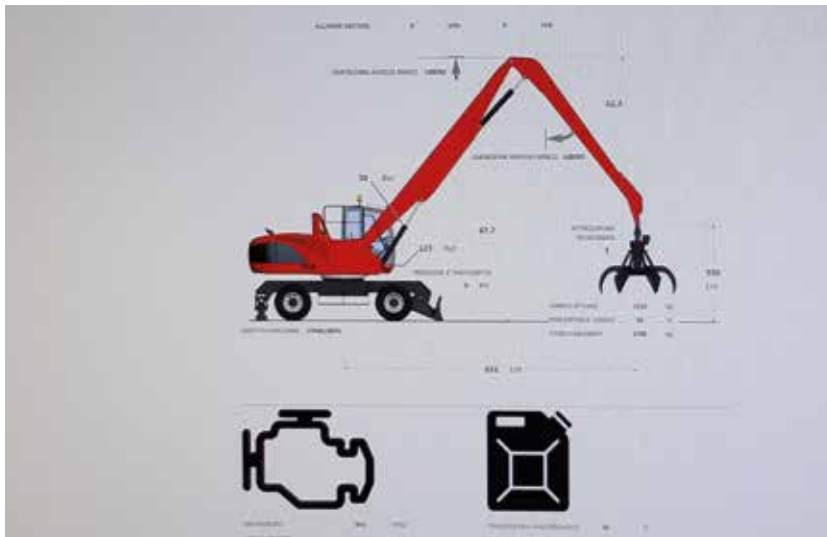


Complete dashboard with 5" color screen and reminder of maintenance intervals. The on-board computer also displays the «OWD» (Overload Warning Device) functions to keep the load being handled under control at all times.

Driver's cab with sliding door and large glass surfaces for better visibility, vertical opening front window, left sliding side window (on the door), wiper with washer fluid, LED headlights and orange beacon on the cab roof.



Solida - SOLmec Link Data (option)



Solida (Solmec Link data) is a tool completely integrate on the material handler monitoring system and it permit to check :

- The position
- The working hours
- Fuel consumption
- Downtime machine
- etc...

These data are viewed through the web interface or integrated connection to the company management system.

Easy access button panel for headlights, wind-shield wipers and radio.



Automatic air conditioned as standard.



3 air conditioning fans separated from the main radiator for a more efficient cooling system.



Roll-up sun blind and wiper on the roof.



Front roll-up sun blind.



3 Standard LED headlights on cab.



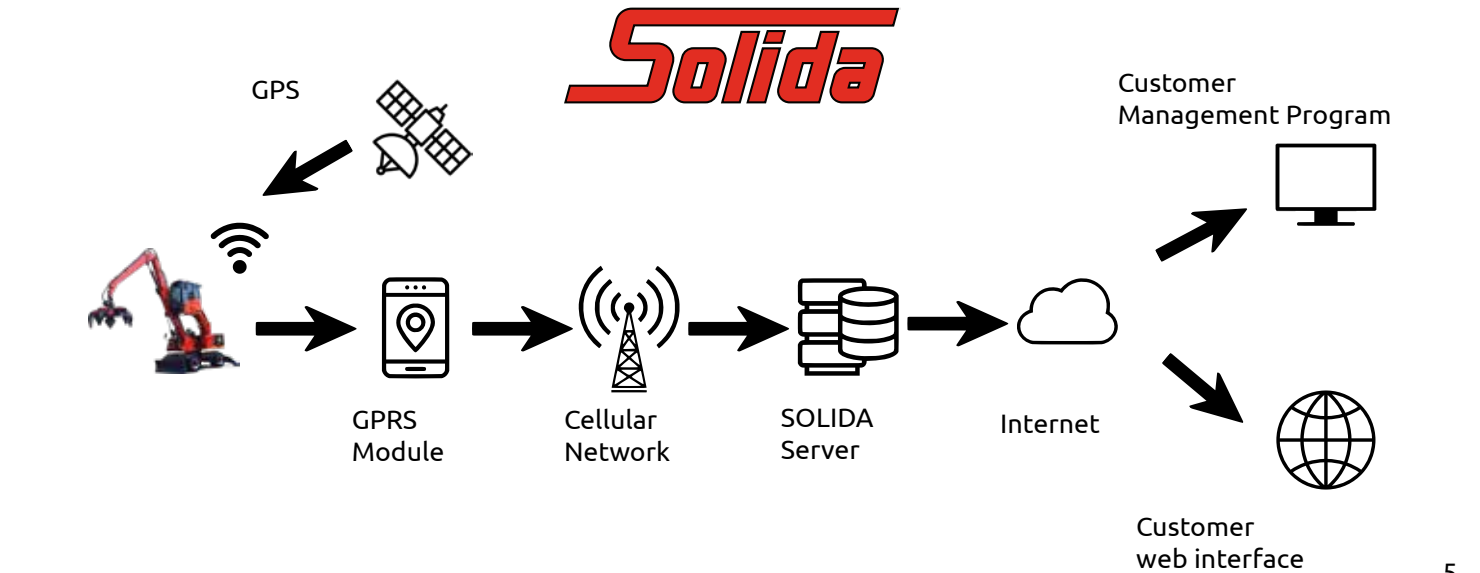
The front vertical opening glass allows the passage of air without letting water in case of rain.

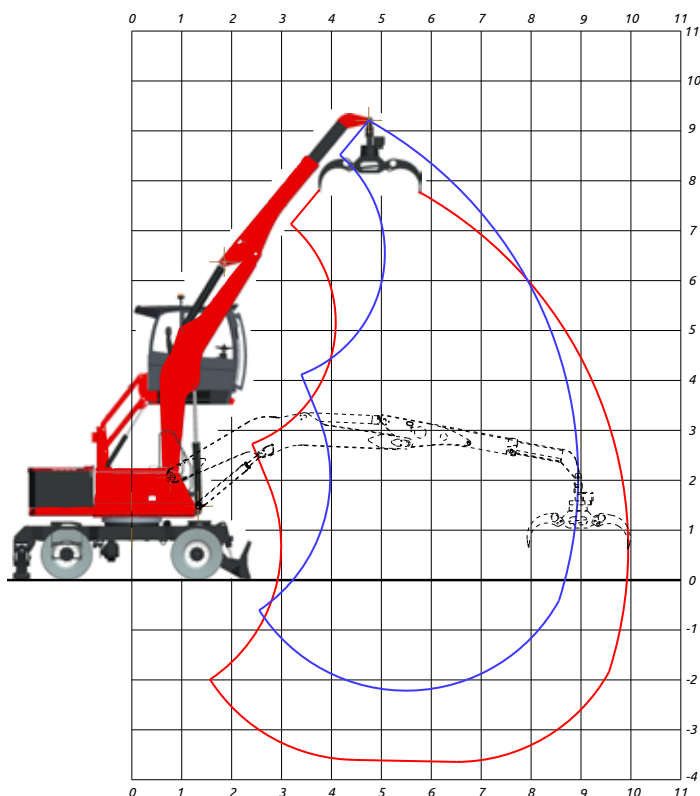


Adjustable steering column



... for a comfortable driving position.





AT8:
Gooseneck boom
4,80 m

Telescopic stick
2,60 - 3,50 m

OPERATING WEIGHT:
25.800 kg

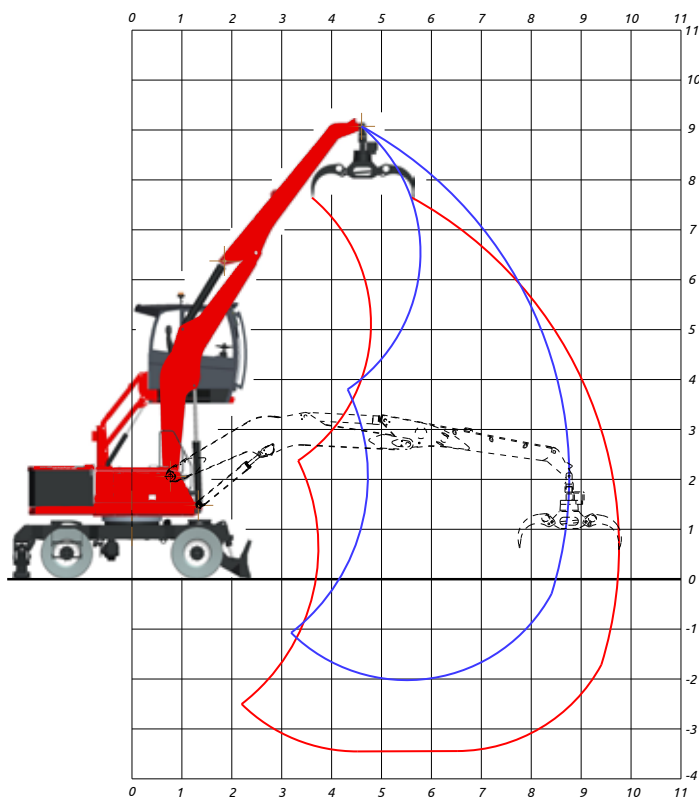
OPERATING WEIGHT WITH FRONT BLADE,
REAR OUTRIGGERS, SOLID RUBBER TYRES,
GOOSENECK BOOM 4,80 m,
TELESCOPIC STICK,
RV 400 ORANGE PEEL GRAB WITH ROTATOR

LIFTING CAPACITIES TONS

LIFTING RANGE (m)

HEIGHT METRES	CONF.	4,0			5,5			7,0			8,5			9,0		
		↗	○	⊙	↗	○	⊙	↗	○	⊙	↗	○	⊙	↗	○	⊙
8,0	○○				4,65*	4,65*	3,7*									
	┐┐				4,65*	4,65*	3,7*									
	└└				4,65*	4,65*	3,7*									
6,0	○○				4,46*	4,46*	3,55*	4,16*	4,16*	3,21						
	┐┐				4,46*	4,46*	3,55*	4,16*	4,16*	3,30*						
	└└				4,46*	4,46*	3,55*	4,16*	4,16*	3,30*						
4,0	○○	5,03*	5,03*	3,79*	5,14*	5,14*	4,09*	4,40*	4,40*	3,12	3,97*	3,31*	2,32			
	┐┐	5,03*	5,03*	3,79*	5,14*	5,14*	4,09*	4,40*	4,40*	3,49*	3,97*	3,97*	3,14*			
	└└	5,03*	5,03*	3,79*	5,14*	5,14*	4,09*	4,40*	4,40*	3,49*	3,97*	3,97*	3,14*			
2,0	○○	8,78*	8,78*	6,24	6,20*	5,96*	4,17	4,88*	4,30*	3,01	4,22*	3,25*	2,28	3,86*	3,03	2,12
	┐┐	8,78*	8,78*	6,98*	6,20*	6,20*	4,93*	4,88*	4,88*	3,87*	4,22*	4,22*	3,35*	3,86*	3,86*	3,03*
	└└	8,78*	8,78*	6,98*	6,20*	6,20*	4,93*	4,88*	4,88*	3,87*	4,22*	4,22*	3,35*	3,86*	3,86*	3,03*
0,0	○○	10,27*	8,41*	5,88	6,98*	5,67*	3,97	5,24*	4,17*	2,92	4,06*	3,20	2,24			
	┐┐	10,27*	10,27*	8,16*	6,98*	6,98*	5,54*	5,24*	5,24*	4,16*	4,06*	4,06*	3,22*			
	└└	10,27*	10,27*	8,16*	6,98*	6,98*	5,54*	5,24*	5,24*	4,16*	4,06*	4,06*	3,22*			
-2,0	○○				6,47*	5,44*	3,81									
	┐┐				6,47*	6,47*	5,13*									
	└└				6,47*	6,47*	5,13*									

↗ LIFTING CAPACITIES ON LONGITUDINAL AXIS ○ LIFTING CAPACITIES ON 360° WITHOUT SAFETY FACTOR ⊙ LIFTING CAPACITIES ON 360° ACCORDING WITH ISO 10567
* = HYDRAULIC LIMIT
LIFTING CAPACITIES ARE ON HOOK WITHOUT GRABS, MACHINE STATIC, LEVEL SOLID GROUND, WITH AXLE LOCKED.



AF8:
Gooseneck boom
4,80 m

Industrial stick
3,30 m

OPERATING WEIGHT:
25.400 kg

OPERATING WEIGHT WITH FRONT BLADE,
REAR OUTRIGGERS, SOLID RUBBER TYRES, G
OOSENECK BOOM 4,80 M,
INDUSTRIAL STICK 3,30 M,
RV 400 ORANGE PEEL GRAB WITH ROTATOR

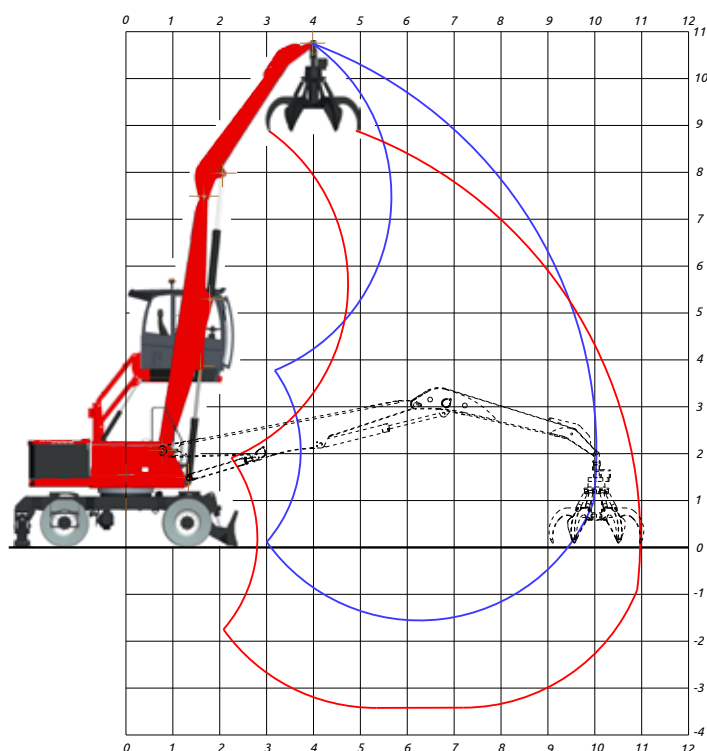
LIFTING CAPACITIES TONS

LIFTING RANGE (m)

HEIGHT METRES	CONF.	4,0			5,5			7,0			8,5			9,0		
		↗	○	⊙	↗	○	⊙	↗	○	⊙	↗	○	⊙	↗	○	⊙
8,0	○○				4,65*	4,65*	3,7*									
	┐┐				4,65*	4,65*	3,7*									
	└└				4,65*	4,65*	3,7*									
6,0	○○				4,46*	4,46*	3,55*	4,16*	4,16*	3,21						
	┐┐				4,46*	4,46*	3,55*	4,16*	4,16*	3,30*						
	└└				4,46*	4,46*	3,55*	4,16*	4,16*	3,30*						
4,0	○○	5,03*	5,03*	3,79*	5,14*	5,14*	4,09*	4,40*	4,40*	3,12	3,97*	3,31*	2,32			
	┐┐	5,03*	5,03*	3,79*	5,14*	5,14*	4,09*	4,40*	4,40*	3,49*	3,97*	3,97*	3,14*			
	└└	5,03*	5,03*	3,79*	5,14*	5,14*	4,09*	4,40*	4,40*	3,49*	3,97*	3,97*	3,14*			
2,0	○○	8,78*	8,78*	6,24	6,20*	5,96*	4,17	4,88*	4,30*	3,01	4,22*	3,25*	2,28	3,86*	3,03	2,12
	┐┐	8,78*	8,78*	6,98*	6,20*	6,20*	4,93*	4,88*	4,88*	3,87*	4,22*	4,22*	3,35*	3,86*	3,86*	3,03*
	└└	8,78*	8,78*	6,98*	6,20*	6,20*	4,93*	4,88*	4,88*	3,87*	4,22*	4,22*	3,35*	3,86*	3,86*	3,03*
0,0	○○	10,27*	8,41*	5,88	6,98*	5,67*	3,97	5,24*	4,17*	2,92	4,06*	3,20	2,24			
	┐┐	10,27*	10,27*	8,16*	6,98*	6,98*	5,54*	5,24*	5,24*	4,16*	4,06*	4,06*	3,22*			
	└└	10,27*	10,27*	8,16*	6,98*	6,98*	5,54*	5,24*	5,24*	4,16*	4,06*	4,06*	3,22*			
-2,0	○○				6,47*	5,44*	3,81									
	┐┐				6,47*	6,47*	5,13*									
	└└				6,47*	6,47*	5,13*									

↗ LIFTING CAPACITIES ON LONGITUDINAL AXIS ○ LIFTING CAPACITIES ON 360° WITHOUT SAFETY FACTOR ⊙ LIFTING CAPACITIES ON 360° ACCORDING WITH ISO 10567
*= HYDRAULIC LIMIT

LIFTING CAPACITIES ARE ON HOOK WITHOUT GRABS, MACHINE STATIC, LEVEL SOLID GROUND, WITH AXLE LOCKED.



DF10:
Straight boom
5,50 m

Industrial stick
4,00 m

OPERATING WEIGHT:

25.900 kg

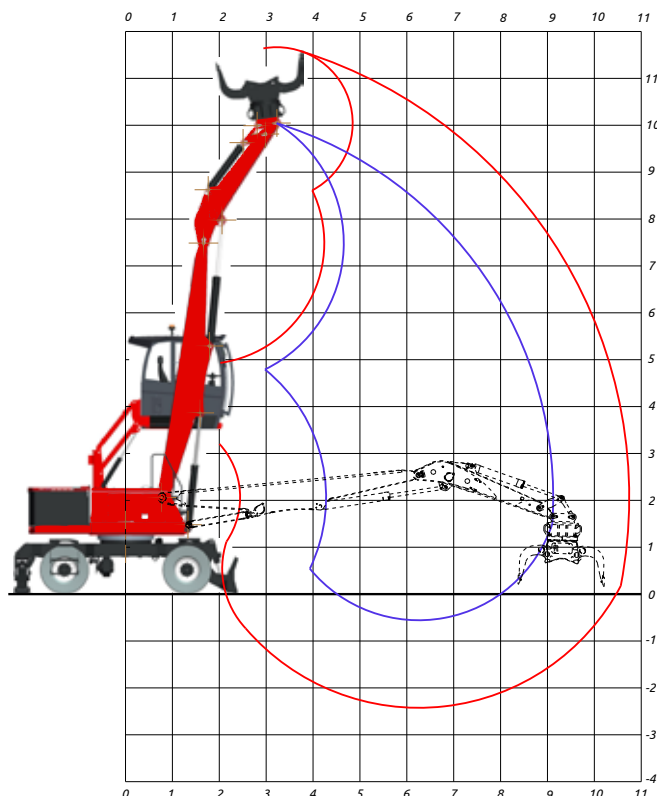
OPERATING WEIGHT WITH FRONT BLADE,
REAR OUTRIGGERS, SOLID RUBBER TYRES,
GOOSENECK BOOM 5,50 m,
INDUSTRIAL STICK 4,00 m,
RV 400 ORANGE PEEL GRAB WITH ROTATOR

LIFTING CAPACITIES TONS

LIFTING RANGE (m)

HEIGHT METRES	CONF.	4,0			5,5			7,0			8,5			10,0		
		↗	○	⊙	↗	○	⊙	↗	○	⊙	↗	○	⊙	↗	○	⊙
8,0	○○				4,93*	4,93*	4,41*	4,20*	4,20*	3,16						
	┐┐				4,93*	4,93*	4,41*	4,20*	4,20*	3,73*						
	└└				4,93*	4,93*	4,41*	4,20*	4,20*	3,73*						
6,0	○○				5,05*	5,05*	4,51*	4,20*	4,20*	3,16	3,58*	3,35	2,34			
	┐┐				5,05*	5,05*	4,51*	4,20*	4,20*	3,73*	3,58*	3,58*	3,17*			
	└└				5,05*	5,05*	4,51*	4,20*	4,20*	3,73*	3,58*	3,58*	3,17*			
4,0	○○	7,47*	7,47*	6,61*	5,51*	5,51*	4,27	4,39*	4,35	3,04	3,63*	3,31	2,32			
	┐┐	7,47*	7,47*	6,61*	5,51*	5,51*	4,90*	4,39*	4,39*	3,89*	3,63*	3,63*	3,21*			
	└└	7,47*	7,47*	6,61*	5,51*	5,51*	4,90*	4,39*	4,39*	3,89*	3,63*	3,63*	3,21*			
2,0	○○	9,01*	8,67	6,07	6,03*	5,67	3,97	4,56*	4,14	2,91	3,61*	3,22	2,25	2,57*	2,56	1,79
	┐┐	9,01*	9,01*	8,00*	6,03*	6,03*	5,35*	4,56*	4,56*	4,03*	3,61*	3,61*	3,19*	2,57*	2,57*	2,25
	└└	9,01*	9,01*	8,00*	6,03*	6,03*	5,35*	4,56*	4,56*	4,03*	3,61*	3,61*	3,19*	2,57*	2,57*	2,25
0,0	○○	4,72*	4,72*	4,02*	5,79*	5,38	3,77	4,31*	3,99	2,79	3,21*	3,13	2,19			
	┐┐	4,72*	4,72*	4,02*	5,79*	5,79*	5,11*	4,31*	4,31*	3,81*	3,21*	3,21*	2,82*			
	└└	4,72*	4,72*	4,02*	5,79*	5,79*	5,11*	4,31*	4,31*	3,81*	3,21*	3,21*	2,82*			
-2,0	○○				6,47*	5,44*	3,81									
	┐┐				6,47*	6,47*	5,13*									
	└└				6,47*	6,47*	5,13*									

↗ LIFTING CAPACITIES ON LONGITUDINAL AXIS ○ LIFTING CAPACITIES ON 360° WITHOUT SAFETY FACTOR ⊙ LIFTING CAPACITIES ON 360° ACCORDING WITH ISO 10567
 *= HYDRAULIC LIMIT
 LIFTING CAPACITIES ARE ON HOOK WITHOUT GRABS, MACHINE STATIC, LEVEL SOLID GROUND, WITH AXLE LOCKED.



DS9:
Straight boom
5,50 m

Selector arm
3,00 m

OPERATING WEIGHT:

26.100 kg

OPERATING WEIGHT WITH FRONT BLADE,
REAR OUTRIGGERS, SOLID RUBBER TYRES,
STRAIGHT BOOM 5,50 m,
SELECTOR ARM
RS 501X SELECTOR GRAB WITH ROTATOR

LIFTING CAPACITIES TONS

LIFTING RANGE (m)

HEIGHT METRES	CONF.	4,5			6,0			7,5			9,1		
		↗	○	⊙	↗	○	⊙	↗	○	⊙	↗	○	⊙
8,0	○○				4,72*	4,72*	3,65						
	┌┐				4,72*	4,72*	4,18*						
	└└				4,72*	4,72*	4,18*						
6,0	○○	6,11*	6,11*	5,45*	4,67*	4,67*	3,61	3,81*	3,67	2,57			
	┌┐	6,11*	6,11*	5,45*	4,67*	4,67*	4,14*	3,81*	3,81*	3,36*			
	└└	6,11*	6,11*	5,45*	4,67*	4,67*	4,14*	3,81*	3,81*	3,36*			
4,0	○○	6,79*	6,79*	5,13	4,95*	4,95*	3,47	3,84*	3,57	2,50			
	┌┐	6,79*	6,79*	6,03*	4,95*	4,95*	4,37*	3,84*	3,84*	3,38*			
	└└	6,79*	6,79*	6,03*	4,95*	4,95*	4,37*	3,84*	3,84*	3,38*			
2,0	○○	7,31*	6,93*	4,85	5,10*	4,73	3,31	3,75*	3,45	2,42	2,45*	2,45*	1,85
	┌┐	7,31*	7,31*	6,33*	5,10*	5,10*	4,50*	3,75*	3,75*	3,29*	2,45*	2,45*	2,12*
	└└	7,31*	7,31*	6,33*	5,10*	5,10*	4,50*	3,75*	3,75*	3,29*	2,45*	2,45*	2,12*
0,0	○○	5,65*	5,65*	4,61	4,26*	4,26*	3,15	3,07*	3,07*	2,37			
	┌┐	5,65*	5,65*	4,96*	4,26*	4,26*	3,74*	3,07*	3,07*	2,67*			
	└└	5,65*	5,65*	4,96*	4,26*	4,26*	3,74*	3,07*	3,07*	2,67*			

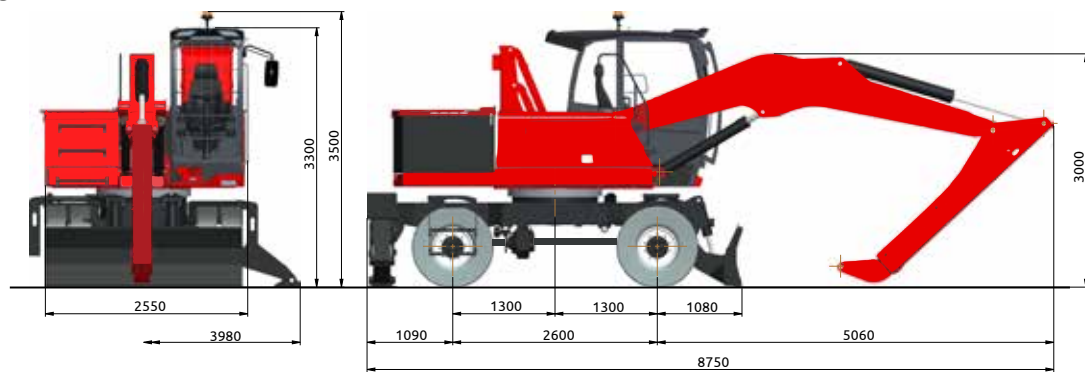
↗ LIFTING CAPACITIES ON LONGITUDINAL AXIS ○ LIFTING CAPACITIES ON 360° WITHOUT SAFETY FACTOR ⊙ LIFTING CAPACITIES ON 360° ACCORDING WITH ISO 10567

*= HYDRAULIC LIMIT

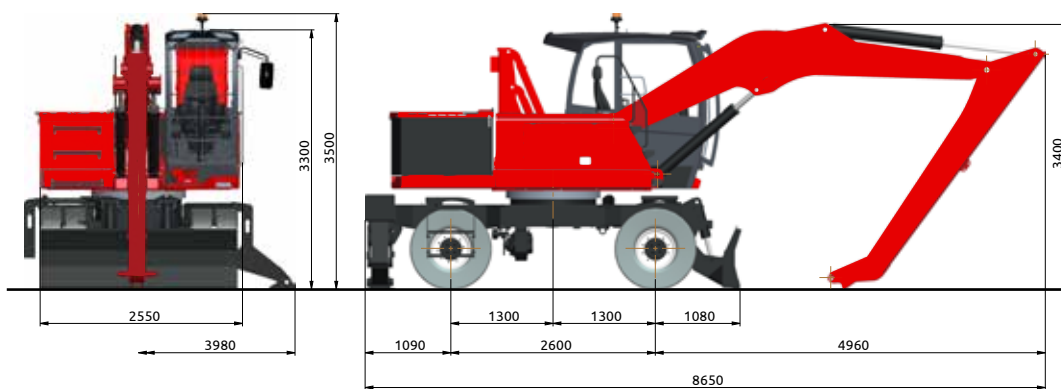
LIFTING CAPACITIES ARE ON HOOK WITHOUT GRABS, MACHINE STATIC, LEVEL SOLID GROUND, WITH AXLE LOCKED.

DIMENSIONS

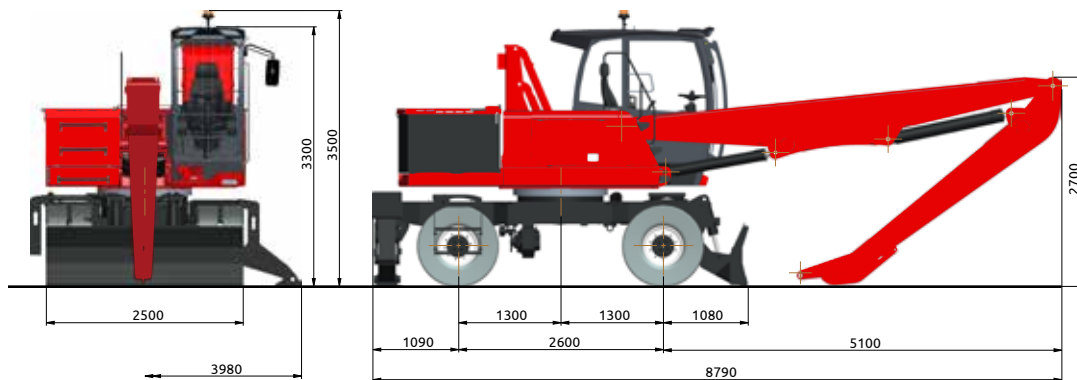
AT8



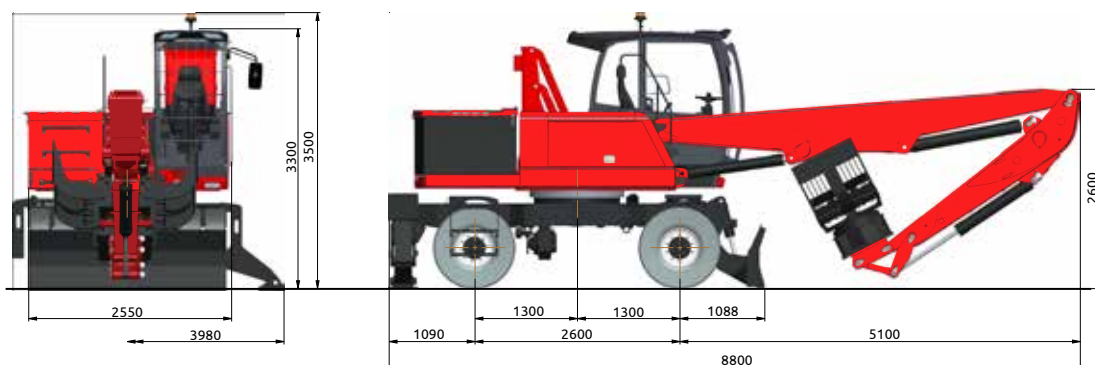
AF8



DF10



AS9



TECHNICAL DATA EXP 5020ZE

ELECTRIC MOTOR

Three phase electric motor with electronic control by inverter. 2 work speed are available, variable speed in function of the working mode choised.

4 working mode are suitable: POWER, NORMAL, ECO, FINE.

Max power:	40 kW + 25 kW (swing system)
Rotating speed	2300 rpm.
Max torque:	300 Nm

ELECTRICAL CIRCUIT

Powered by 2 parallel batteries from 930A to 120V.

Voltage transformer from 120V to 24V for auxiliary circuits.

Two inverters controlled by CAN-BUS for the management and control of the hydraulic pump and swing system.

"High Frequency" electronic battery chargers and high efficiency charging.

HYDRAULIC SYSTEM

Open "LOAD SENSING" circuit constituted by a variable displacement axial pump, with automatic flow setting, 4 power levels setting from the display, feeding a distributor block composed by 6 elements, with high pressure control valves and anti-choc valves on each element. Possibility of adjusting the oil flow on each element.

Auxiliary services powered by the main pump.

Max. flow:	185 l/min
Max. hydraulic pressure:	310 bar
Hydraulic tank capacity:	160 l
Hydraulic circuit capacity:	240 l

Additional pumps for brakes, direction and servo controls.

Hydraulic oil cooling by aluminium heat exchanger.

Thermostatic 24 volt fan.

Micrometric filter for the hydraulic oil on the return line, integrated on the tank and on the control line.

TRAVEL

Hydrostatic with 4 wheel drive by means of a variable displacement hydraulic axial piston motor mounted on a two speed gearbox hydraulically operated from the cab coupled to the rear axle

Travel controlled by two separate pedals (one for each travel direction).

Travel speed (in both directions)

Working speed:	from 0 to 6 km/h
Travel speed:	from 0 to 17 km/h

Differential axles 2,50 m wide with planetary reduction gears on the hubs.

Braking valve integrated on the hydraulic motor.

STEERING

Hydraulic steering system powered by an independent pump.

The front floating steering axle can be hydraulically locked from the cabin in any position.

BRAKES

SERVICE BRAKES: multiple discs oil bath on the hubs, hydraulically operated by the pedal.

PARKING AND EMERGENCY BRAKES: hydraulically released disk-type brake mounted on driveshaft.

SWING SYSTEM

Unlimited rotation in both directions thanks to a three-phase electric motor electronically controled by inverter. Braking of the rotation controlled by the inverter with recovery of energy to recharge of the main batteries. The electric motor is mounted on a dual stage oil bath planetary gearbox with negative oil bath brake discs and automatically released. High diameter double row ball bearing ring with internal teeth. Automatic greasing system

Max rotation speed:	8 rpm
Tail swing radius:	2,35 m

TYRES

n° 8 front and rear twinned solid rubber tyres SUPERELASTIC.
- 10.00x20 with spacer rings

OPERATOR'S CAB

Hydraulically operated raising driver's cab mounted on a parallelogram linkage installed on silent block with large windows of tinted heat resistant safety glass; front vertical opening window, and lateral sliding window, roof glass with safety grill and wiper. Winter heating a ventilation installed as standard. Radio preset. Windscreen wiper with washer.

"GRAN COMFORT" operator's seat with pneumatic shock absorbing suspension, headrest, lumbar support, belt winder, electric seat heating device and armrests adjustable height and angle. Electronic joysticks controlled by CAN-BUS incorporated in the armrests. AUTO-IDLE electronic accelerator with two automatic preselected rpm.

The instrumentation, consisting of a color display on the dashboard, indicates includes:

Motor speed indicator, state of the batteries charge level, hour counter, hydraulic oil temperature, Volt, two converters diagnostics, and maintenance program. Warning lights showing: hydraulic oil filter clogging, park brake, brakes failure, lights, hydraulic oil low level, state of the machine stability, position and mass of the load ...

CONTROLS

N° 2 electronic controlled joysticks to carry out four operations each with electric push buttons incorporated.

Electronic proportional rollers for front blade and/or outriggers and telescopic/selector arm.

Electric button on dashboard for grab rotator. Electro hydraulic devices for controlling hydraulic raising of the cab, parking brakes, front axle oscillation lock, gear box.

ARMS

With reach from 8 to 10 metres.

ENERGY SAVING

KERS (Kinetic Energy Recovery System): Swing system with brake energy recovery. The energy is stored in the main batteries.

LESS (Load Energy Saving System):

System to support the passive loads of the machine. It consists of a hydraulic cylinder directly connected to a hydropneumatic accumulator which guarantees a hydraulic force capable to support the weight of the arms.

SOUND LEVELS

SOUND LEVELS (EEC Directive 2000/14/CE - 2005)
Inside cab LpA 76 dB (A)

ELECTROMAGNETIC COMPATIBILITY

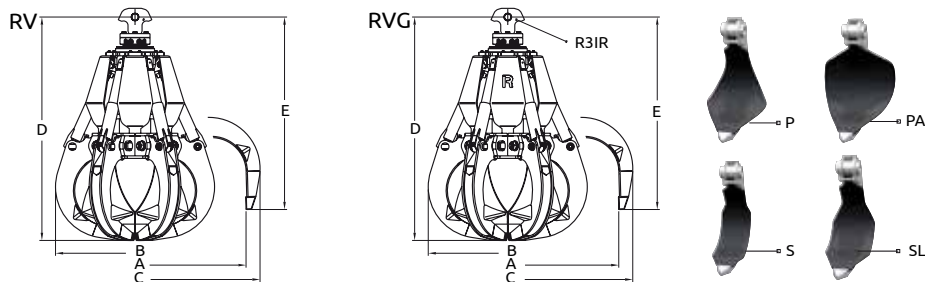
In accordance with CE Directive (Dir. 2004/108/CE)

OVERLOAD WARNING DEVICE

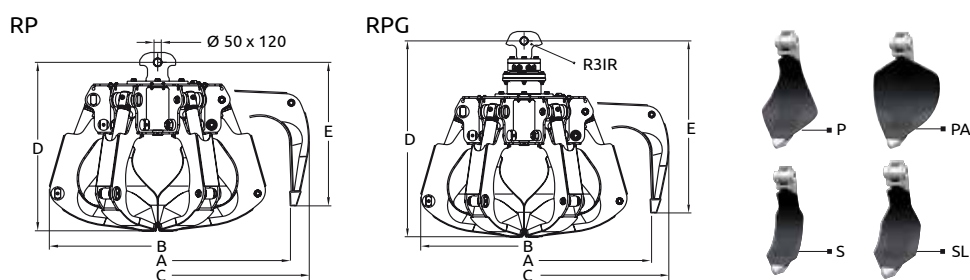
In accordance with CE directive (Dir 2006/42/CE) this device provides to check the crane stability while loading in accordance with loads and distances (as standard). When the stability limits are reached, acoustical and optical warning advise danger conditions before the automatic lock of movements.

ATTACHMENTS

ORANGE PEEL GRABS FOR SCRAP

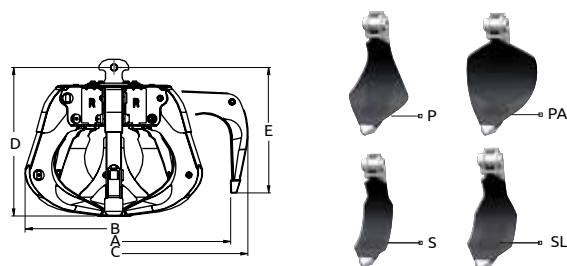


Model	Capacity	Tines	Weight	Nb of Tines	Dimensions in mm				
					A	B	C	D	E
RV400B	400l	P - PA - S - SL	930 kg	5	1750	1240	1960	1750	1370
RV400B	400l	P - PA - S - SL	1020 kg	6	1750	1240	1960	1750	1370
RVG400B	400l	P - PA - S - SL	1000 kg	5	1750	1240	1960	1750	1510
RVG400B	400l	P - PA - S - SL	1090 kg	6	1750	1240	1960	1750	1510



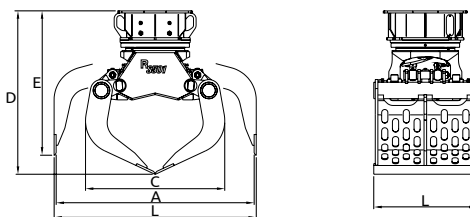
Model	Capacity	Tines	Weight	Nb of Tines	Dimensions in mm				
					A	B	C	D	E
RP500A	500l	P - PA - S - SL	860 kg	5	1830	1490	2100	1165	995
RP500A	500l	P - PA - S - SL	960 kg	6	1830	1490	2100	1165	995
RPG500A	500l	P - PA - S - SL	960 kg	5	1780	1370	2015	1410	1195
RPG500A	500l	P - PA - S - SL	1160 kg	6	1780	1370	2015	1410	1195

ORANGE PEEL GRABS FOR WASTE



Model	Capacity	Tines	Weight	Nb of Tines	Dimensions in mm				
					A	B	C	D	E
RR650A	650	P - PA - S - SL	920 kg	5	2000	1490	2215	1250	1020

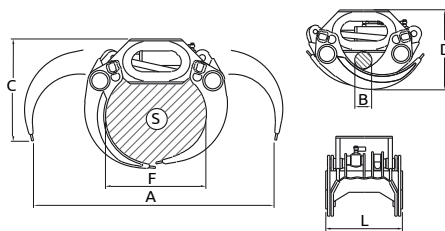
SELECTOR GRAB



Model	Capacity	Tine Force	Weight	Dimensions in mm					
				A	B	C	D	E	L
RS501X	500 l	4760 daN	970 kg	1800	1840	1250	1290	1250	850

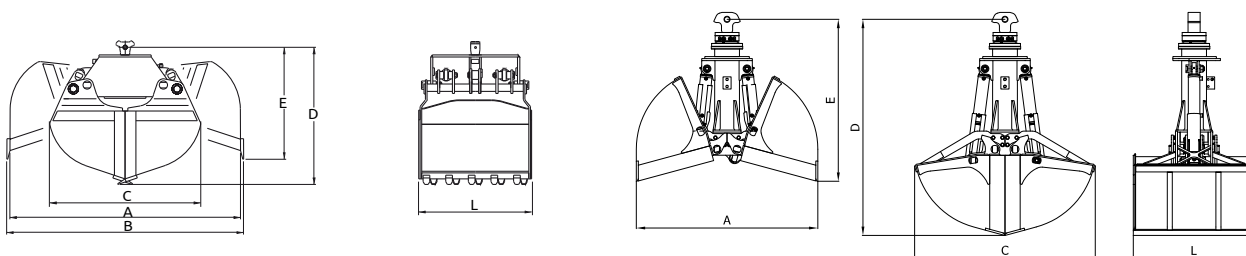
ATTACHMENTS

LOGS GRAPPLES



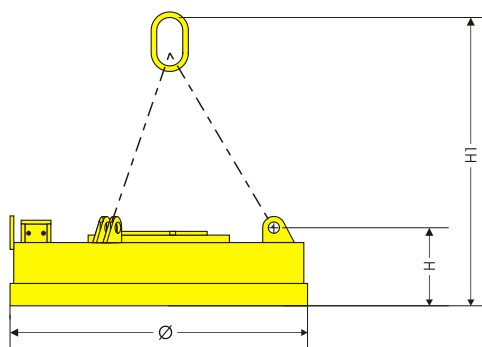
Model	Area	Lifting capacity	Weight	Dimensions in mm					
				A	B	C	D	L	F
R50/401	0,40 m ²	3000 kg	405 kg	1900	140	810	670	640	800
SG520S-HD	0,52 m ²	8000 kg	475 kg	2279	170	886	753	514	-
R50/604	0,60 m ²	4000 kg	800 kg	2160	230	890	890	920	900

CLAMSHELL BUCKETS



Model	Capacity	Tine Force	Weight	Dimensions in mm					
				A	B	C	D	E	L
R41/1000	750 l	4060 daN	880 kg	2140	2220	1400	1320	1100	1020
R41/1200	900 l	4060 daN	940 kg	2140	2220	1400	1320	1100	1250
R32A/1200	1000 l	5420 daN	1150 kg	1800	-	1780	2145	1600	1200

MAGNET PLATES



Model	Absorbed power at 20° C	Nominal	Peso	Ø	H	H1	Hot tear strength (1) Δ= Ø300	Hot Lifting Capacity (2)		Hot Lifting Capacity (3)			
								Slabs or blocks	Drop Ball	Cast Iron Pigs	SCRAP		
	kW	Vdc	kg	mm	mm	mm	kg	kg	kg	kg	3A 2,2 ÷ 2,5 t/m ³	24 1,9 ÷ 2,0 t/m ³	40 0,8 ÷ 1,0 t/m ³
EC 100	5	120	600	1080	215	910	9500	4750	1700	190	170	145	80

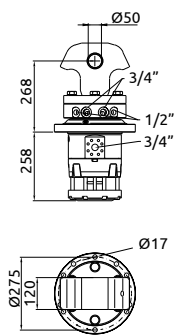
(1) Determined in accordance with VDE 0580 § 36

(2) Determined after 5 hours and an ambient temperature of 20°C in accordance with VDE 0580 § 36.

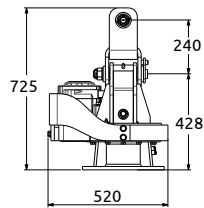
(3) Determined in accordance with VDE 0580 § 44.2-6.

ATTACHMENTS

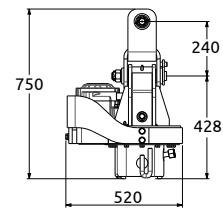
HYDRAULIC ROTATORS



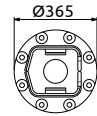
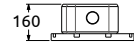
R3IR



GI 60 AF

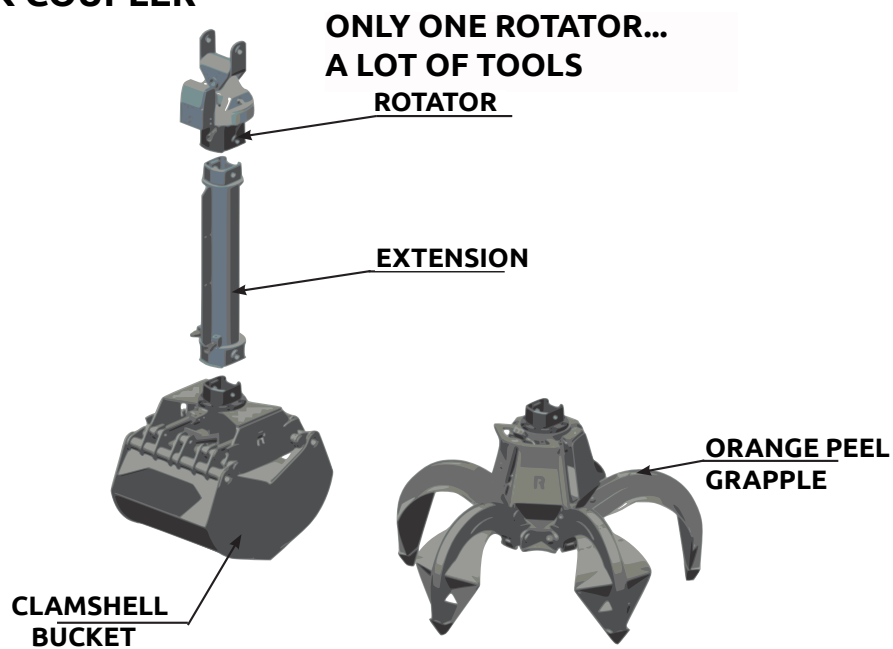


GI 60 AR

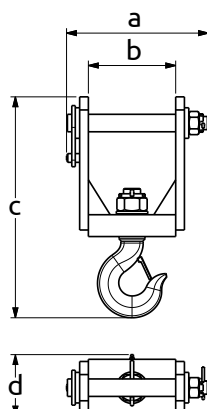


Model	Lifting capacity	Weight	Couple	Rotation max pressure	Rotation max flow	Attachment max pressure	Attachment max flow
R3IR	7 t	125 kg	210 daN.m	190 bar	25 l/min	350 bar	--
GI 60 AF	5 t	200 kg	310 daN.m	100 bar	32 l/min	300 bar	180 lt/mn
GI 60 AR	5 t	210 kg	310 daN.m	100 bar	32 l/min	300 bar	180 lt/mn

SOLMEC QUICK COUPLER



LIFTING HOOK

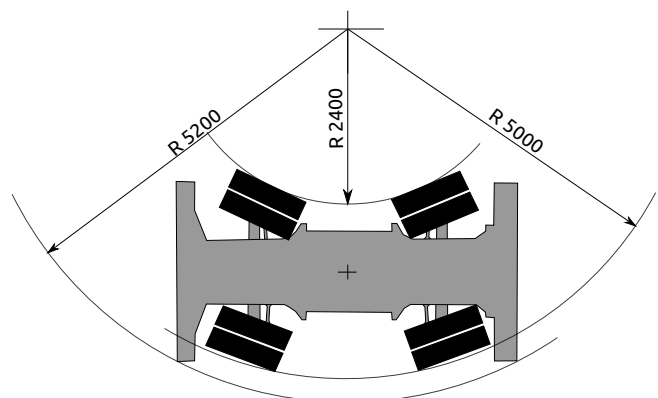


Model	Lifting capacity	Weight	Dimensions in mm			
			a	b	c	d
10T	10.000 kg	40 kg	440	290	542	140

ACCESSORIES

ACCESSORIES	STANDARD	OPTIONAL
- N° 8 TWINNED SOLID RUBBER TYRES WITH SPACER RUBBER RINGS	•	
- DOUBLE STEERING AXLES.		•
- STEERING ON JOYSTICK		•
- GREASING MANUAL SYSTEM FOR UNDERCARRIAGE		•
- GEAR AND CARDAN JOINT PROTECTION		•
- WIDENINGS FOR FRONT DOZER BLADE		•
- TOWING HOOK		•
- HYDRAULIC PARALLELOGRAM RAISING CAB	•	
- HYDRAULIC PARALLELOGRAM RAISING CAB H6000		•
- OPERATOR SEAT WITH PNEUMATIC SUSPENSION AND HEATING DEVICE	•	
- SAFETY SEAT BELT	•	
- AUTOMATIC AIR-CONDITIONING SYSTEM		•
- AIR-CONDITIONING FILTER WITH ACTIVATED CHARCOAL		•
- RADIO WITH BLUETOOTH®		•
- WEIGHTING SYSTEM		•
- ANTI-THEFT "MED" IMMOBILIZER DEVICE		•
- 3 WORKING LIGHTS ON THE CABIN	•	
- FRONT AND ROOF WINDOW SCREEN PROTECTION	•	
- TOTAL PROTECTION FOR THE CABIN		•
- AUTOMATIC GREASING SYSTEM FOR THE UPPERSTRUCTURE AND SLEW RING	•	
- GENERATOR SYSTEM + MAGNET 6 kW - 120V		•
- ADDITIONAL HEATING SYSTEM FOR COLD WEATHER COUNTRIES		•
- CAMERA WITH 7" COLOURED DISPLAY INTO THE CABIN		•
- 2 LED WORKING LIGHTS ON STICK	•	
- SAFETY VALVES ON ALL THE CYLINDERS	•	
- HEIGHT LIMIT DEVICES	•	
- OVERLOAD WARNING DEVICE	•	
- LOCKING ARCH FOR LONG LOGS ON BOOM AND/OR STICK		•
- HYDRAULIC OIL REFILLING PUMPS		•
- SOLIDA REMOTE MONITORING (SOLMEC LINK DATA)		•

DOUBLE STEERING AXLES (OPTIONAL).





Viale delle industrie, 9
45100 ROVIGO - ITALY
phone +39 0425 474833
fax +39 0425 475548
www.solmec.it
solmec@solmec.it